



Goal of ShoreZone's education and outreach subcommittee:

To raise awareness of ShoreZone as a rich source of coastal habitat data and imagery that can improve activities with a coastal component and spur ideas that promote the beauty, diversity, and cultural value of Alaska's coast.



Cook Inlet Regional Citizens Advisory Council

8195 Kenai Spur Hwy., Kenai, AK 99611
(907) 283-7222; 800-652-7222 (toll free); 907-283-6102 (fax)
www.circac.org

Cook Inlet Navigator

March 2014

In This Issue

[Cook Inlet, 25 years after the spill](#)

[Industry partners get CIRT-ified](#)

[Alaska Oil Spill Symposium](#)

[CIRCAC monitors lease sale](#)

[Coming Up in April](#)

Like us on Facebook

Join Our Mailing List!

Furie Drill



Our Mission is to represent the citizens of Cook Inlet in promoting environmentally safe marine transportation and oil facility operations in Cook Inlet.

Cook Inlet, 25 years after the spill

This past month, Alaskans marked the anniversaries of not one, but two life-altering experiences: the 1964 earthquake and the *Exxon Valdez* oil spill-both of which happened on Good Friday, 25 years apart. While the focus of the 25th Anniversary of the *Exxon Valdez* has been fixed on Prince William Sound, it's important to remember that Cook Inlet and other areas were also changed significantly because of the spill. Read [more](#).

Industry partners get CIRT-ified

Two on-line tools, the ShoreZone Alaska website and the Cook Inlet Response Tool (CIRT) data portal, have more than once demonstrated their value during oil spill drills and other planning exercises. Their value during real incidents has also been proven, in particular during the *Kulluk* incident when responders relied on the information provided by high resolution imagery to "see" shore line where the rig went aground, more than 12 hours before they were able to provide overflight imagery to Incident



Joan Yeager (CISPRI) manipulates CIRT screen at Tesoro training.



Expand outreach/training for specific needs/groups



ShoreZone as a First Response Tool -Exposure, Exposure, Exposure

Media

Imaging, mapping project complete for Southeast

by kfskadmin

February 8, 2012 2:16 pm

SHARE [E-mail] [Tweet] [Recommend] [Text-size] [Print Article]

Thousands of miles of low-level aerial photos from Southeast Alaska's coastline are now available to the public. The government-sponsored ShoreZone project is complete for the Panhandle. It was originally developed to aid oil spill responders and has already helped with spill containment around several grounded vessels in Southeast. But the online images are also a handy tool for scientists studying the region's plants and animals, or kayakers looking for a safe camping spot.

KFSK news - ShoreZone mapping complete in Southeast 0:00



<http://www.kfsk.org/2012/02/08/imaging-mapping-project-complete-for-southeast/>

[For iFriendly audio, click here:](#)

The coalition of scientists is seeking what's called a land use designation two, or LUD-II, the most restrictive category on the Tongass besides a wilderness designation, for the 77 fish streams.



Castle River, Kupreanof Island photo from ShoreZone at <http://www.fakr.noaa.gov/shorezone/>

“Our interest in the land use designation two, which was established in 1990 under the Tongass Timber Reform Act, is to allow a variety of uses but particularly to protect these very important salmon producing watersheds from roads and clear-cut logging that have potentially very long-term impacts on salmon,” explained John Schoen, science advisor emeritus with Audubon Alaska, explained. “So we envision

[Listen to KFSK](#)

[Join us on Facebook](#)

[Follow us on Twitter](#)

[PETERSBURG WEATHER](#)

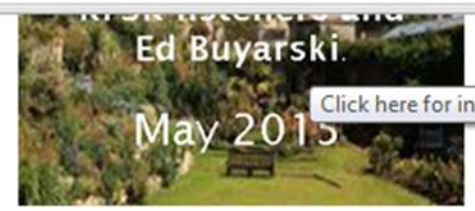


RAIN

LIKELY. HIGHS AROUND 46. SOUTHEAST WIND 10 MPH.

[Extended Forecast](#)

[Extended Forecast – Satellite View](#)



[KFSK LIVE WEB CAM](#)



Frederick Sound from KFSK Tower

SPECIAL THANKS TO:

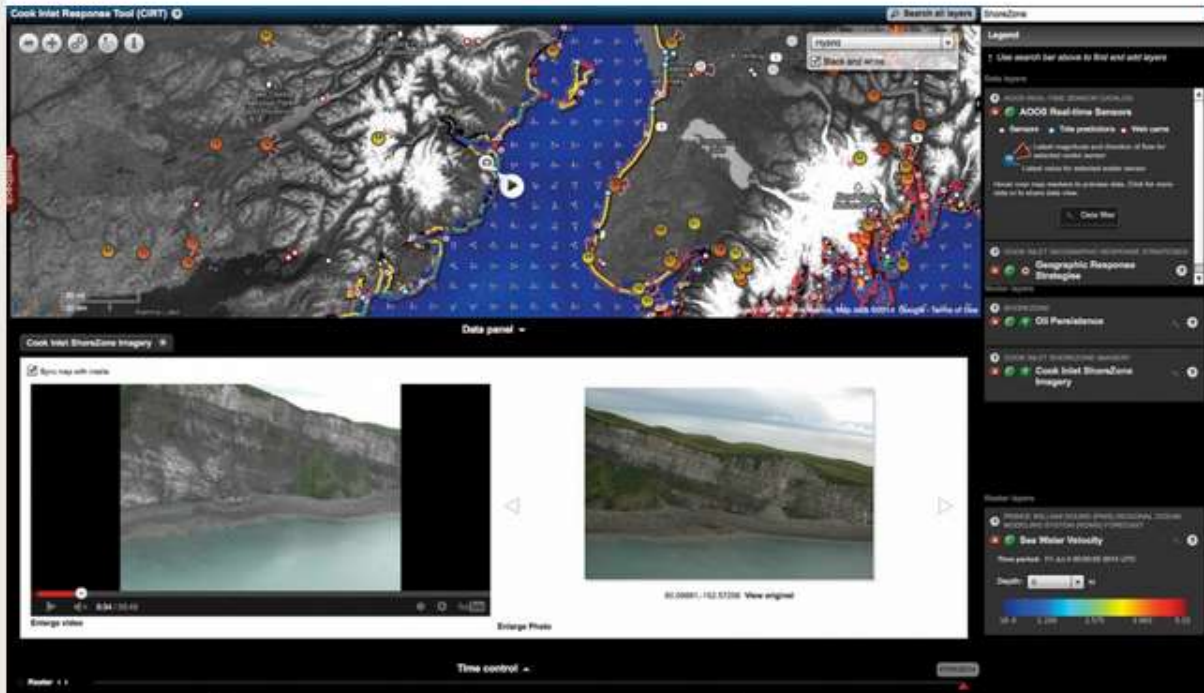
[Seaside House](#) for [underwriting](#) portions of the

Born in spill planning, uses for ShoreZone tool expanding

BY MOLLY DISCHNER, ALASKA JOURNAL OF COMMERCE



Published: 2014.07.10 11:37 AM



A program originally brought to Alaska to support oil spill planning and response efforts in Cook Inlet has since expanded to most of the state with uses from coastal monitoring to art and education.

The coastal mapping endeavor ShoreZone's Alaska debut was as a Cook Inlet Regional Citizens Advisory Council pilot project in 2001. Now, about 80 percent of Alaska's coastline is mapped including Southeast Alaska and the North Slope.

Saturday, 9-10am
KFQD 750 AM
Listen Live - www.kfqd.com

PRESENT
THE BIG ALASKA SHOW

Sponsored by:



Alaska's Premier Glass Company
Vinyl windows, shower doors,
glass repairs - almost anything
to do with glass!
Visit www.cgnw.com



Firetap Alehouse & Restaurant in
Anchorage!



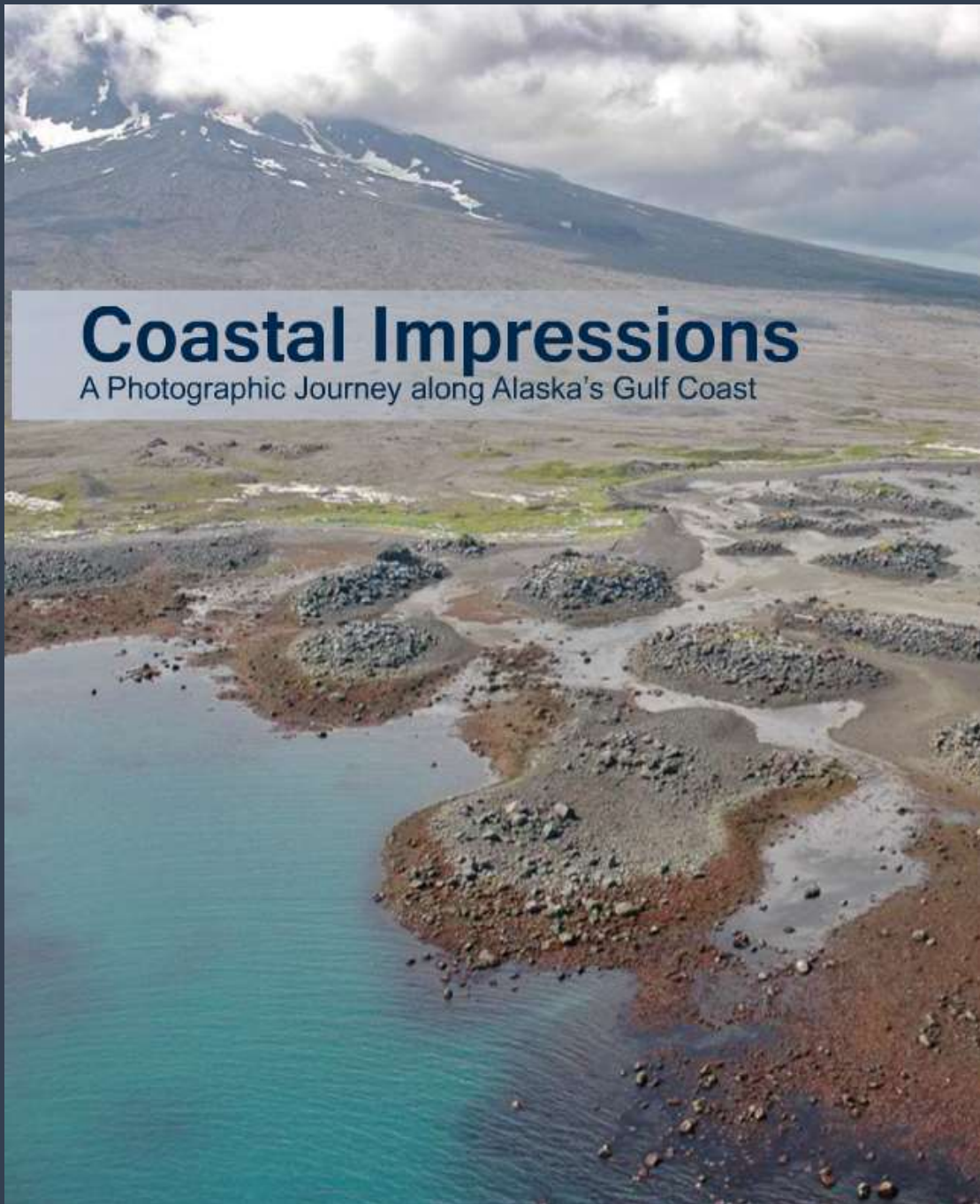
Alaska Women Making a Difference

Mapping Coastline is a BIG Job with BIG Benefits



Sue Saupe and Amalie Couvillion tell us why ShoreZone maps the
Alaska coastlines and the value it brings.

Plus they are the only ones we know that work with geomorphologists!



Coastal Impressions

A Photographic Journey along Alaska's Gulf Coast

ShoreZone has been a powerful tool for educating others about our coast



Coastal Impressions
A Photographic Journey along Alaska's Gulf Coast



Coastal Impressions
A Photographic Journey along Alaska's Gulf Coast



Point Nowell, Knight Island Passage, Prince William Sound

Ancient Rock
July 3, 2004

N 60 27.471, W 147 57.077

The rock forming these mainland sea cliffs are of the Valdez Group and composed of tightly folded and metamorphosed marine greywacke, and dark gray to black slate, intruded in some areas by granite. The Valdez Group is probably tens of thousands of feet thick and underlies much of the adjacent Chugach and Kenai Mountains. This formation includes the oldest bedded rocks exposed in the Prince William Sound region and is resistant to weathering, thus forming most of the steep cliffs and pinnacles in this region. The relatively uniform slope of this sea cliff allows for well-defined vertical zonation of intertidal organisms with the black lichen (*Verrucaria maura*) in the supratidal, the brown rockweed (*Fucus distichus*) in the high zone, and a new set of barnacle recruits in the mid zone. A small section of the low zone is visible near the waterline where larger adult barnacles (*Semibalanus cariosus*) dominate the rock surface.



Unnamed Islet, Chenega Island, Prince William Sound

An Island in the Sound
July 3, 2004

N 60 16.683, W 148 07.753

The rock ramp surrounding this islet is formed by rock strata dipping or angled seaward. Rock ramps are common shoreline features with low to moderate angle strata and the bedding-plane determines the shore slope. The blue water color is caused by fine sediments suspended in the freshwater discharge of nearby tidewater glaciers flowing from the Sargent Icefield. The finely ground rock flour was eroded from the surrounding Kenai Mountain Range. Clay (2-4 microns in diameter) and silt (4-65 microns in diameter) that compose rock flour have a high absorption coefficient for short wavelength light and absorbs only part of the blue light. The water absorbs the red, orange, and yellow light, so only green and some blue light are reflected. The glacial water is less dense than ocean water and, in the absence of strong winds, waves, or currents, the freshwater layer does not readily mix and literally floats on the ocean surface through the semi-diurnal tide cycle. This has a profound effect on intertidal organisms and only the most tolerant marine plants and animals can survive these conditions, such as the rockweed (*Fucus distichus*) and black lichen (*Verrucaria maura*) on this rock ramp.



26

27

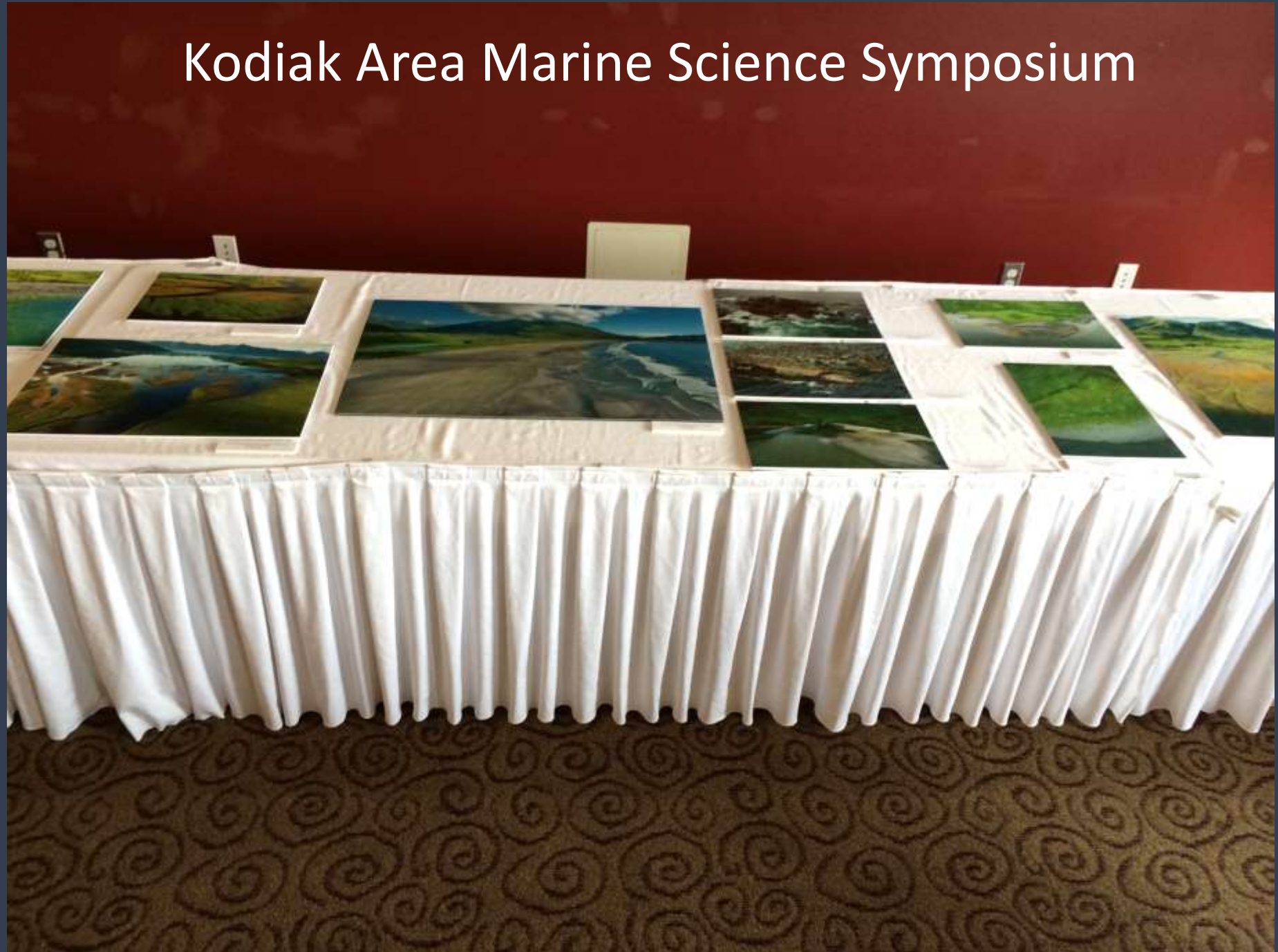


Arctic Impressions

A Photographic Journey along Alaska's Arctic Coast



Kodiak Area Marine Science Symposium





Local and Cultural Projects



Show points menu

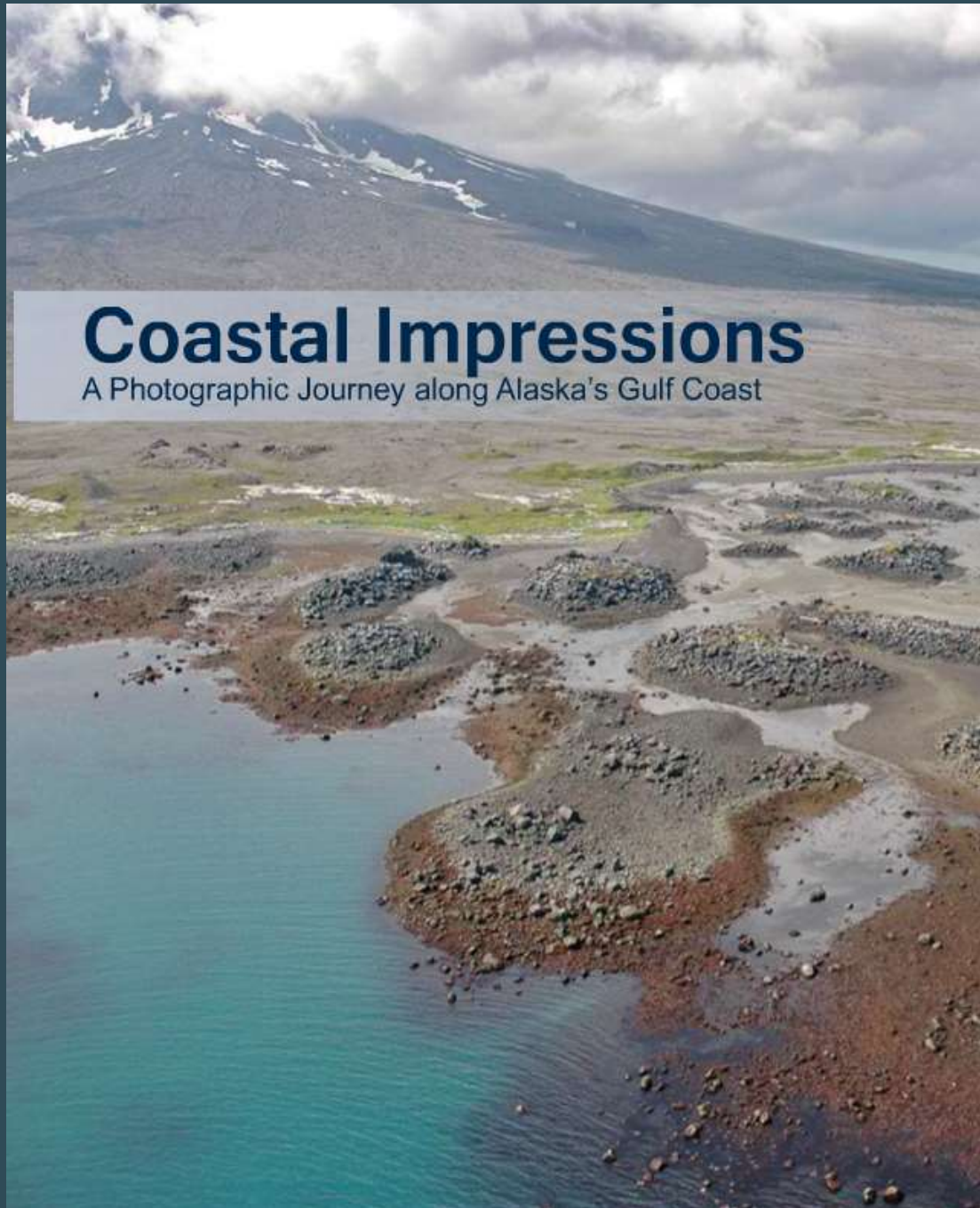
 Helicopter flight path

 Current tape flight path

show / hide video display

0.60 miles
1 km

Clear



ShoreZone Exhibits

Coastal Impressions:
A Photographic Journey Along
Alaska's Gulf Coast

Arctic Impressions:
A Photographic Journey Along
Alaska's Arctic Coast

Others (e.g. Kodiak Impressions,
Cultural exhibits)

ShoreZone Education

- Outreach to schools is an excellent way to engage rural Alaskan communities:
 - Strategic approach due to high teacher turn-over rates
 - Stressed by standards-based academic requirements.
 - Leverage other entities already working to integrate new curriculum into schools
- Outreach and education expanded through partnerships with groups (some existing, some new) that are using ShoreZone for a variety of purposes and have their own outreach programs to communities and/or visitors (e.g. tourism industry).

ShoreZone Education

- Training for media – Familiarity with ShoreZone so it can become a “go-to” resource for any stories related to coastal Alaska.
- Learn to talk to Media and Public – “1000 most common words...”
- Media Training –
 - Who is our audience?
 - Where are your 3 lasting messages (e.g. hook them in, memorable, relateable...)
 - What do you want the audience to do?
- Media Tactics –
 - On-line slide show, tutorials for media
 - Pitch Sheets

ShoreZone Education

- Value of exhibits – great support by tourism industry representative about value of making ShoreZone “accessible” to the general public. Follow up with series of actions in prep for their annual meeting next fall in Juneau.
- More “pre-compiling” of imagery – narrated slide shows
- “Create your own Field Guide”

ShoreZone-inspired Art

The Art Guide | Entry Calls x

theartguide.com/callforentries

The Art Guide

The Source for ART Exhibitions
ARTISTS, GALLERIES
& MUSEUMS

REGISTER | LOGIN

HOME FEATURED GALLERIES FEATURED ARTISTS EXHIBITIONS EVENTS CALL FOR ENTRIES ADVERTISE DONATE CONTACT

Call For Entries

Displaying 1-25 of 126 results.

Event Name	Gallery Name	State	Entry Deadline
Fourth Plain Bus Rapid Transit Project Art	Clark County Public Transportation Benefit Area (dba C-TRAN)	WA	Oct 30, 2014
Magdalena	International House	LA	Oct 31, 2014
Paint Your County Parks II	Foundry Art Centre	MO	Oct 31, 2014
Art Basel Miami Week 2014 Cosmic Connections Exhibition December 1-7 2014	Contemporary Art Projects USA	FL	Oct 31, 2014
Calling All Photographic Artists	UPA Gallery	FL	Oct 31, 2014
Reflections Online Photography Competition	Photography Center of Cape Cod	MA	Oct 31, 2014
Open Call For Photography Free Photo Studio Time	Brooklyn Grain	NY	Oct 31, 2014
Call for Designs for a Commemorative T Shirt for Exhibition The F Word: Feminism Now	ARC Gallery and Educational Foundation	IL	Oct 31, 2014
Reflections Online Photography Exhibit	Cape Cod Art Association	MA	Oct 31, 2014
Call for Artists: Hidden Rooms - Identities . Cities . Memories	Ca' Zanardi	IL	Oct 31, 2014
Call for collaborators!	Richard Medina	IL	Oct 31, 2014
Call for exhibitors in Barcelona, Berlin and Rome	TUNA Prize	NY	Oct 31, 2014

2:08 PM
10/29/2014

Why ShoreZone Is Important

Alaska has more coastline than the continental United States. For the first time ever, the Alaska ShoreZone Project is taking an inventory of the biology and geology of Alaska's coast.



Outreach – Annual Partner's Meeting!

respond to and plan for the dynamic coastal changes taking place in Alaska.

You can fly the coastline, download spatial data and view photos for:

- Oil spill and emergency planning, response, and recovery
- Community planning for climate change impacts
- Search and rescue
- Fisheries habitat management
- Desktop reconnaissance
- Invasive species detection and monitoring
- Marine debris clean-up

****NEW** June 4, 2014** ShoreZone Arctic photos from the North Slope are now together with the mapping data on the Flex Site. From Point Hope to the Canadian border, view and map ShoreZone images and attributes:

Click here to access====> ShoreZone Flex Site including ARCTIC COAST pictures



<http://alaskafisheries.noaa.gov/shorezone/chmprotocol0114.pdf>
^^LINK to new FINAL 2014 ShoreZone protocol^^

Subscribe to Alaska ShoreZone Distribution List

Summer 2014 All-Partner ShoreZone Meeting

On **Thursday June 26th at 10:00 am** we will be having the ShoreZone

1. GENERAL INFORMATION	Date (dd/mm/yy)	Time (24h standard/daylight)	Tide Height LMH
Segment ID:			

PRE-SCAT Summary

Unit: 04/01/0195

Length: 301 m
Width: 5 m

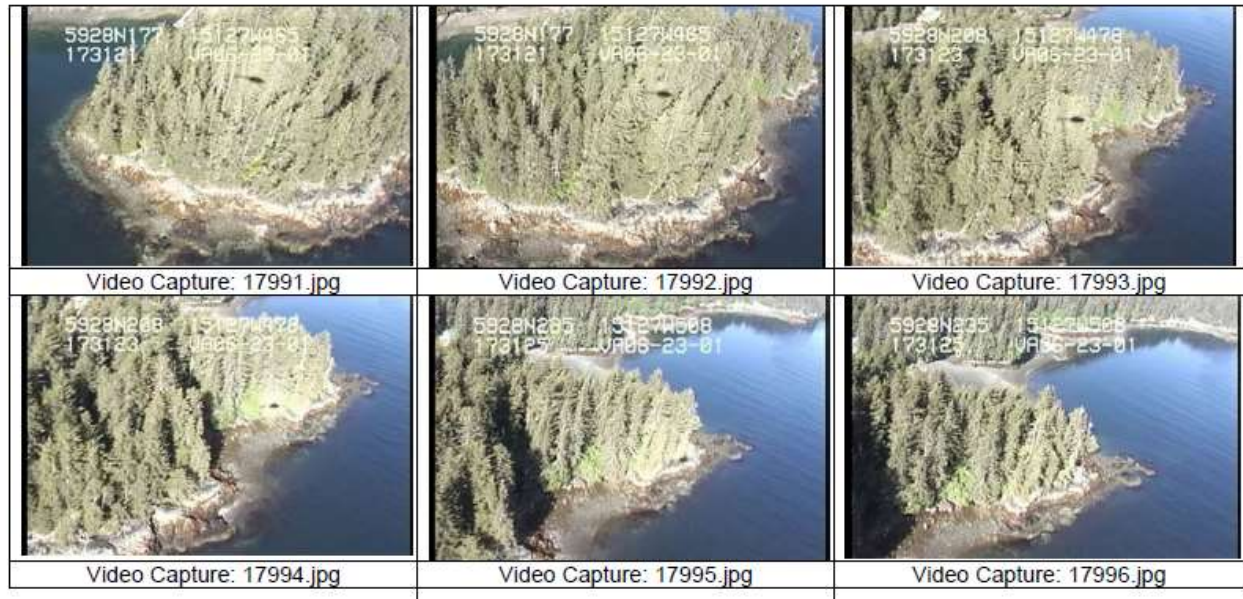
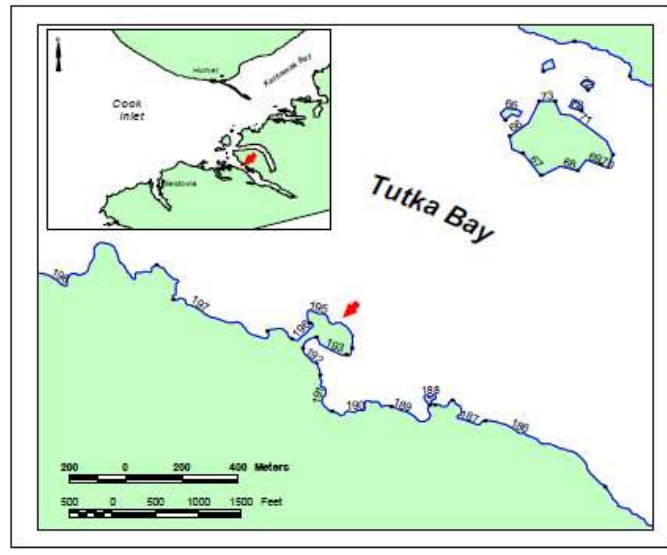
Type: rock ramp with boulder-cobble-pebble beach (BC Class = 9)

Exposure: semi-protected

ESI Type: sheltered, rocky, rubble shore

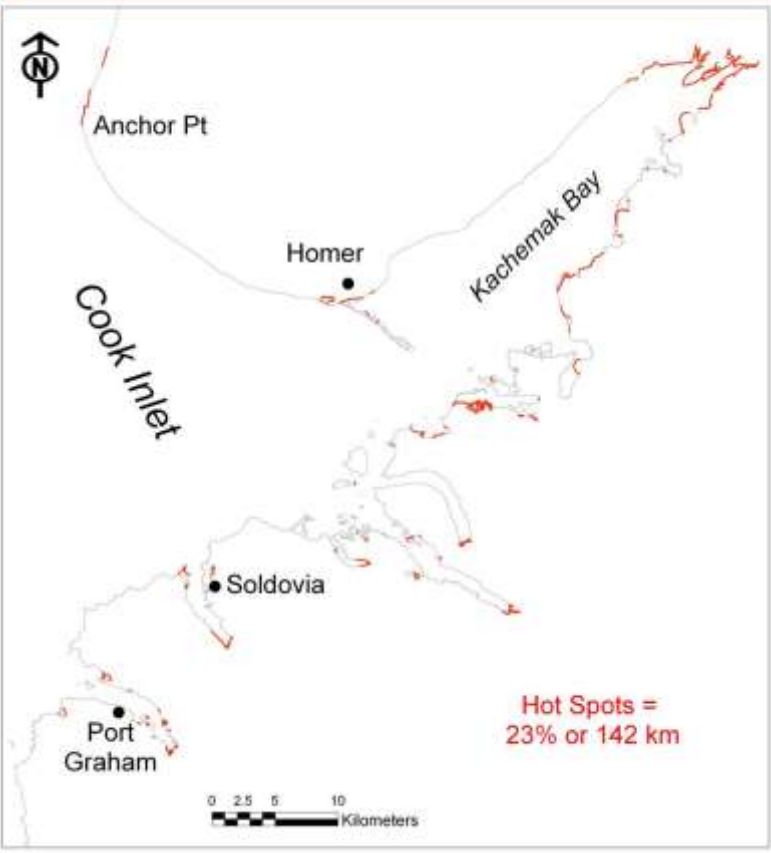
Oil Residence: weeks to months

Concerns: coarse beach, blue mussels, bull kelp



690

Hot Spots



Oil Residence Index

