

# Marine Use Planning for Haida Gwaii, British Columbia

2014 Annual ShoreZone Partner Meeting  
October 29<sup>th</sup>, 2014  
Anchorage, AK

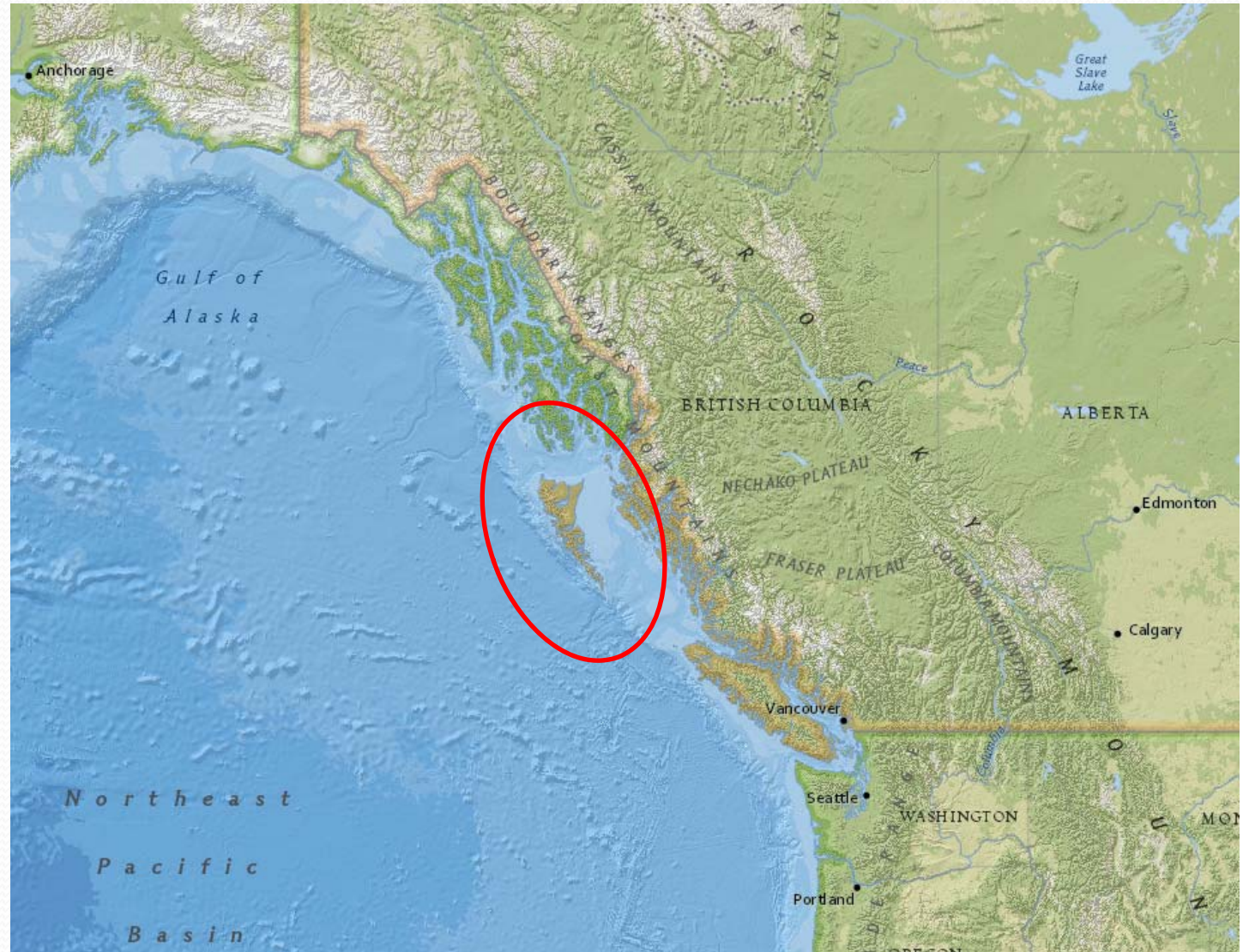
Chris McDougall  
Marine Spatial Planner / GIS Analyst  
Haida Ocean Technical Team  
[chris.mcdougall@haidanation.com](mailto:chris.mcdougall@haidanation.com)

# Presentation Overview

- Geographic area / Haida Gwaii overview
- Marine planning processes
- Haida Gwaii MaPP Sub-regional planning
- Data sources used
- Spotlight on ShoreZone data



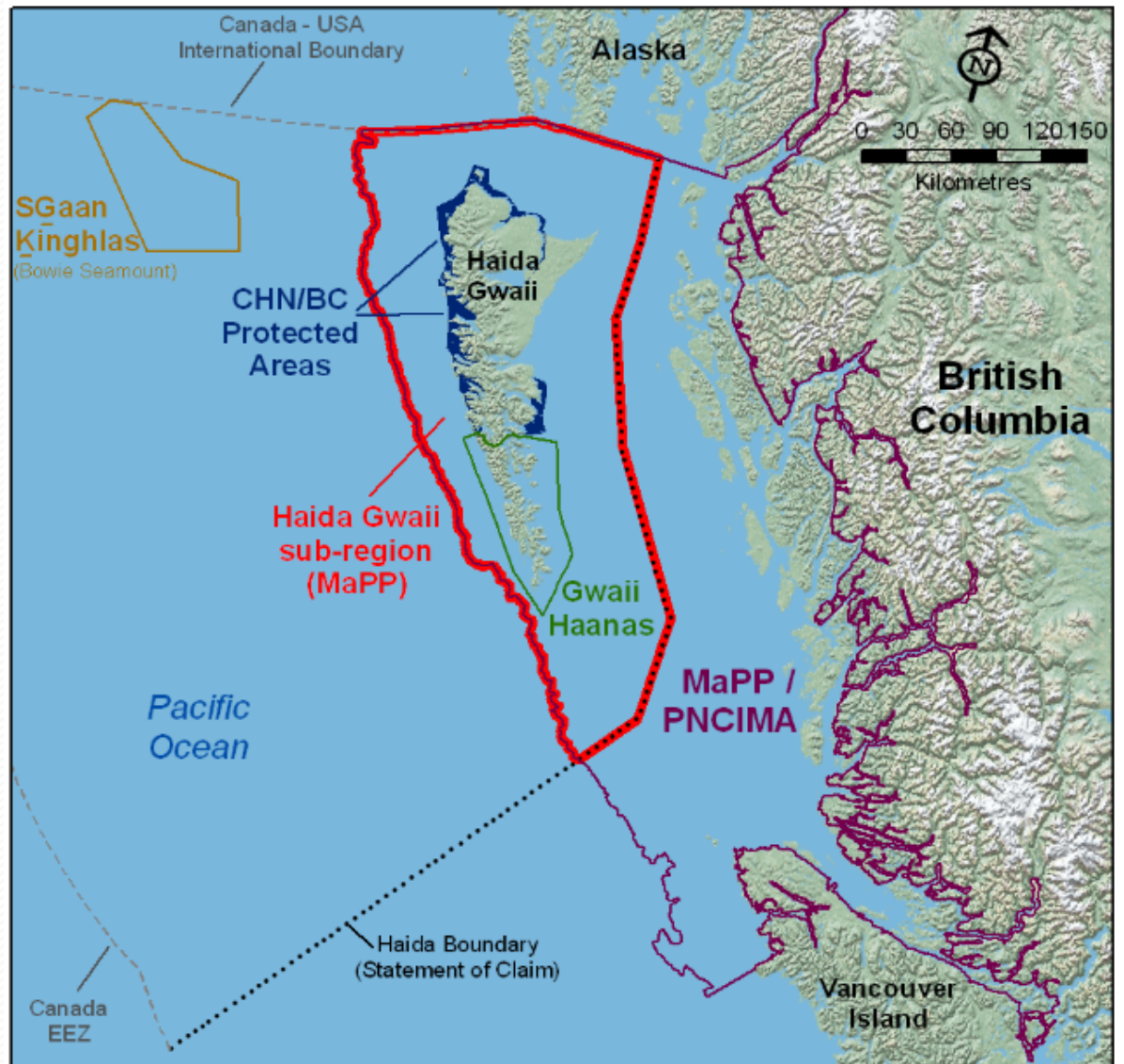
# Geographic Area



# Geographic Area



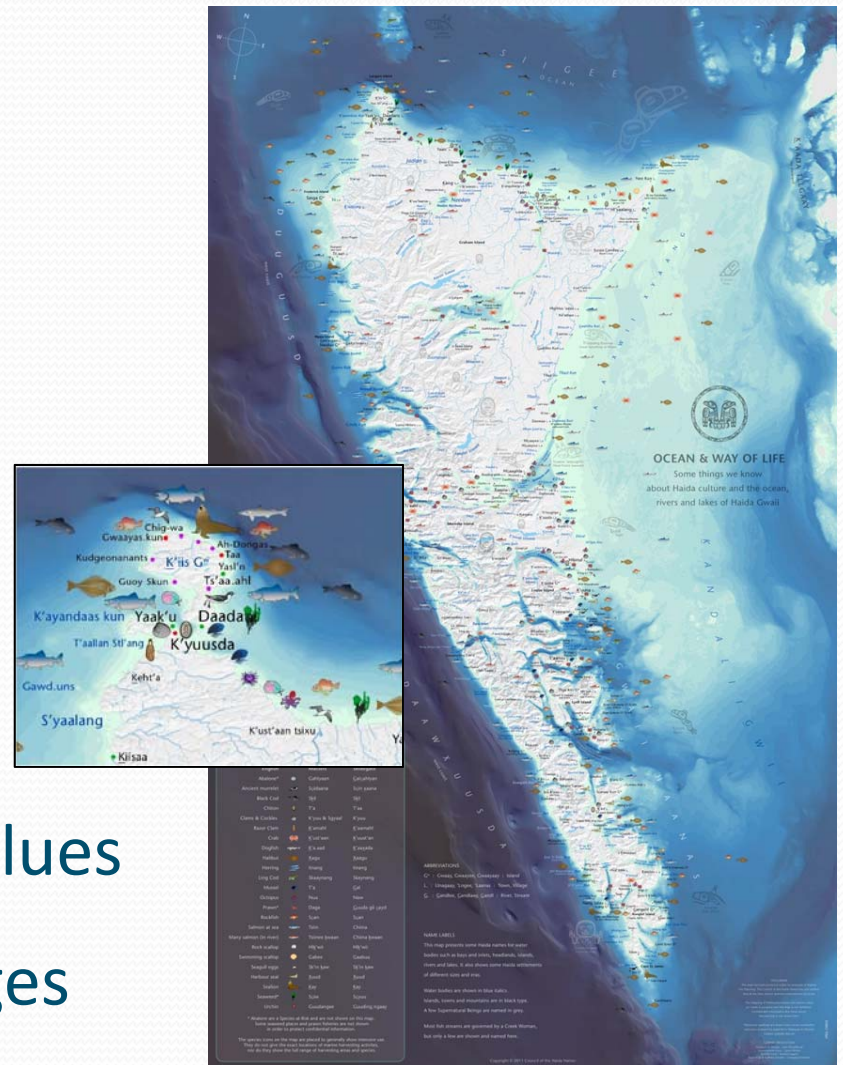
# Multiple marine planning processes underway



# Why develop Marine Plans?

A plan is needed to:

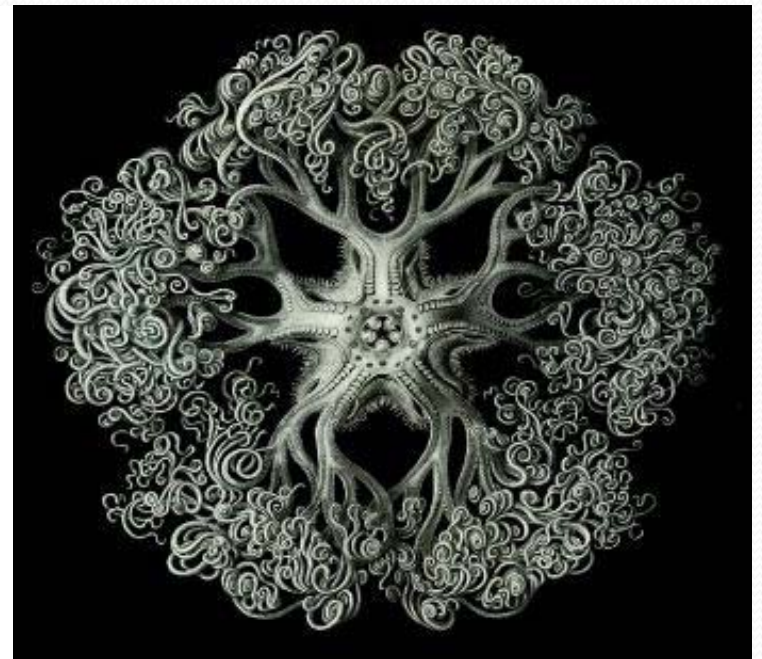
- Reduce threats to Haida Gwaii ecosystems and species
- Guide acceptable marine uses
- Support marine economic development and sustainable Haida Gwaii communities
- Uphold Haida / Haida Gwaii values
- Reduce impact of global changes



# Haida Gwaii Marine Vision

*We see a future for Haida Gwaii that has healthy intact ecosystems that continue to sustain Haida culture, all communities, and an abundant diversity of life, for generations to come. We will respect the sea around us and restore a balance between marine resource use and the well-being of life of the ocean.*

*- From Haida Gwaii MaPP plan document*



# Aspatial elements of MaPP Plan

## GENERAL MANAGEMENT DIRECTION (GMD)

- *Governance and Integrated Management*
- *Cultural Values and Archaeological Sites and Areas*
- *Ecological Values and Significant Features*
- *Ecological Issues related to the Fisheries Economy*
- *Human Wellbeing*
- *Marine Pollution and Spills*
- *Logging-related Marine Activities*
- *Climate Change*



# Aspatial elements of MaPP Plan

## ECONOMIC DEVELOPMENT DIRECTION (EDD)

- *Marine Tourism*
- *Shellfish Aquaculture*
- *Community-based Fisheries Economy*
- *Marine Research and Monitoring*
- *Marine-based Renewable Energy*



# Spatial elements of MaPP Plan

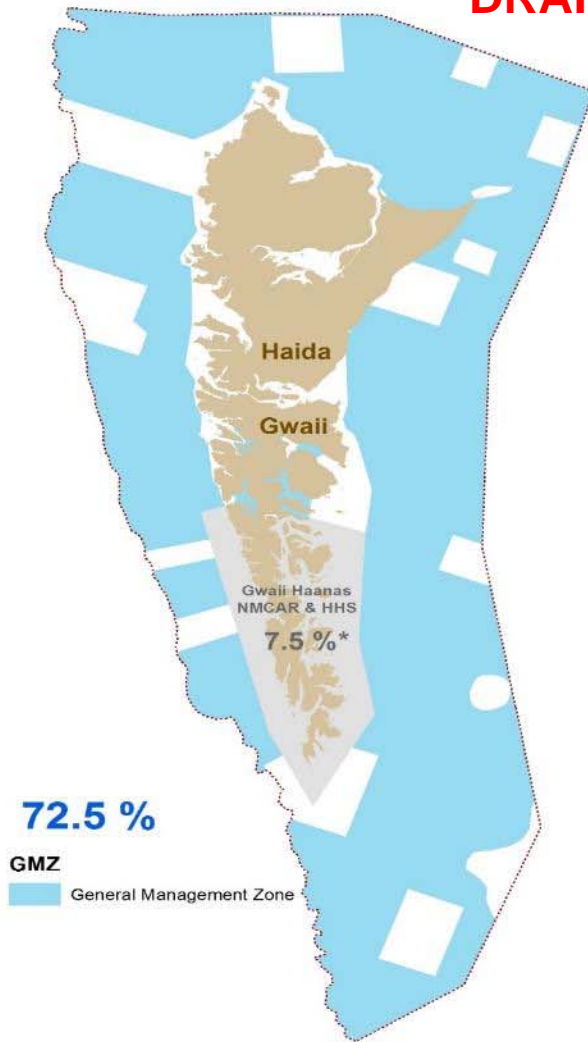
*Marine Spatial Planning: Designates space amongst users and the environment, reduces conflict and plans for future uses*

- *Zoning Plan – Three Types of Zones*
  - *General Management Zone*
  - *Protection Management Zone*
  - *Special Management Zone*
- *Zoning Maps*
- *Recommended Use and Activity Tables*

*Note that zoning does not direct uses or activities outside of provincial regulatory authority.*



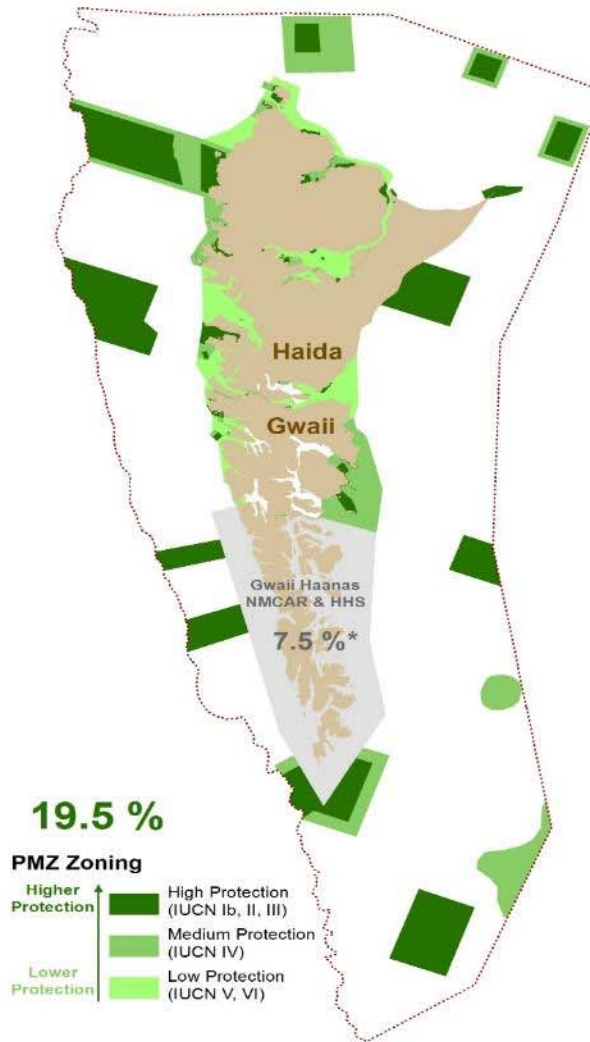
**DRAFT**



**General Management Zone (GMZ):**

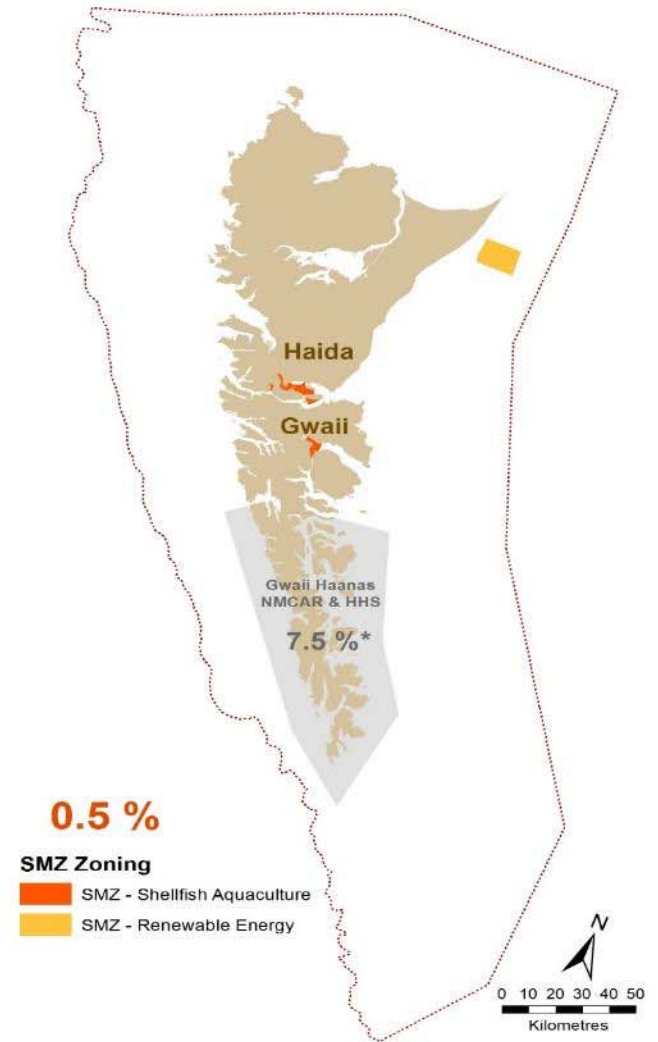
Areas where the full range of sustainable marine uses and activities may occur, subject to existing legislation and policy.

\* NOTE: The additional 7.5% of the MaPP Haida Gwaii sub-region falls within Gwaii Haanas, which is addressed through a separate planning process.



**Protection Management Zones (PMZ):**

Areas managed to conserve natural values. There are three levels of conservation focus for these zones: High (strong emphasis on natural values), Medium (focus primarily on specific species and ecosystems), and Low (mix of conservation and sustainable human uses).



**Special Management Zones (SMZ):**

Areas particularly well-suited to specific sustainable marine uses and activities. The Haida Gwaii Marine Plan recognizes areas with high capability for shellfish aquaculture and marine-based renewable energy.

Zoning does not direct uses or activities outside of provincial regulatory authority.



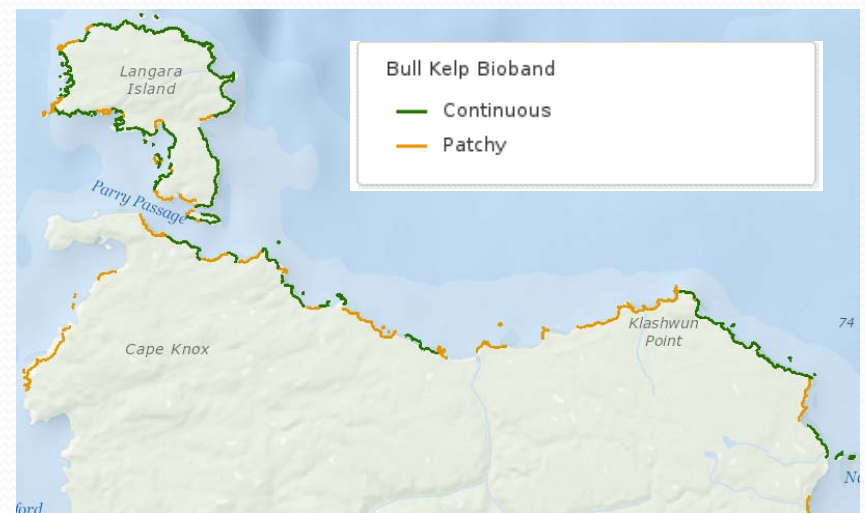
# Data and Information Sources

- Based on traditional knowledge, local knowledge and best available science and information
- Advised by **Haida Marine Work Group** and **Haida Gwaii Marine Advisory Committee**
- **CHN and BC technical staff** reviewed and refined draft policy and management direction and zoning
- **Public meetings** and meetings with various stakeholders
- Finalized marine plan after public review and input



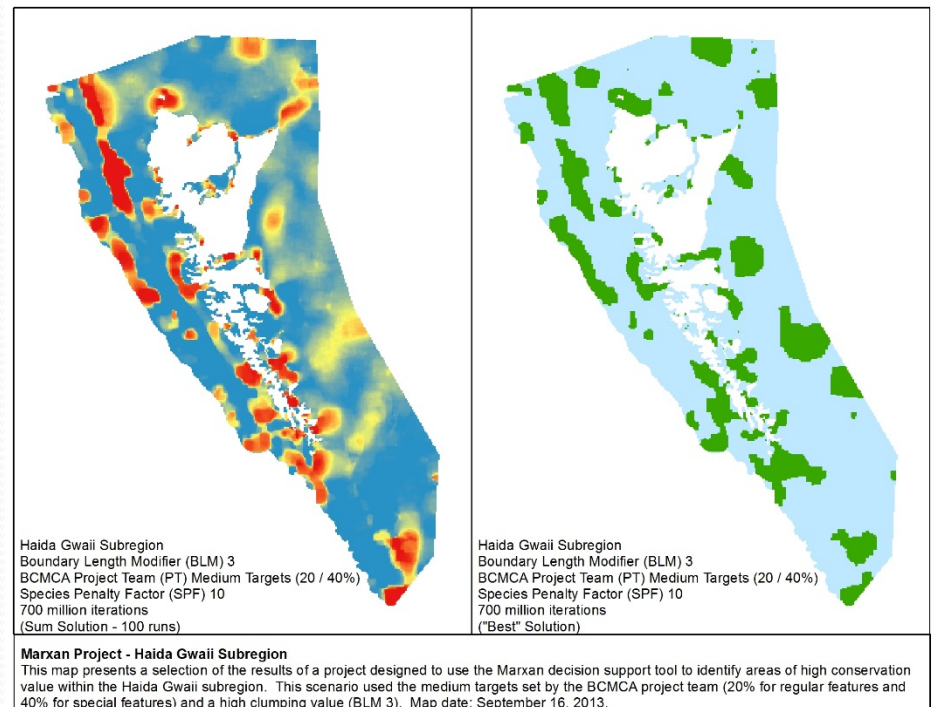
# Spotlight on ShoreZone

- Key dataset for nearshore values
- Consistent throughout entire archipelago (and all BC)
- Used to estimate representation:
  - Eelgrass (bioband) – patchy and continuous
  - Kelp: Bull and Giant (bioband) – patchy and continuous
  - Estuaries (Coastal Class), etc.



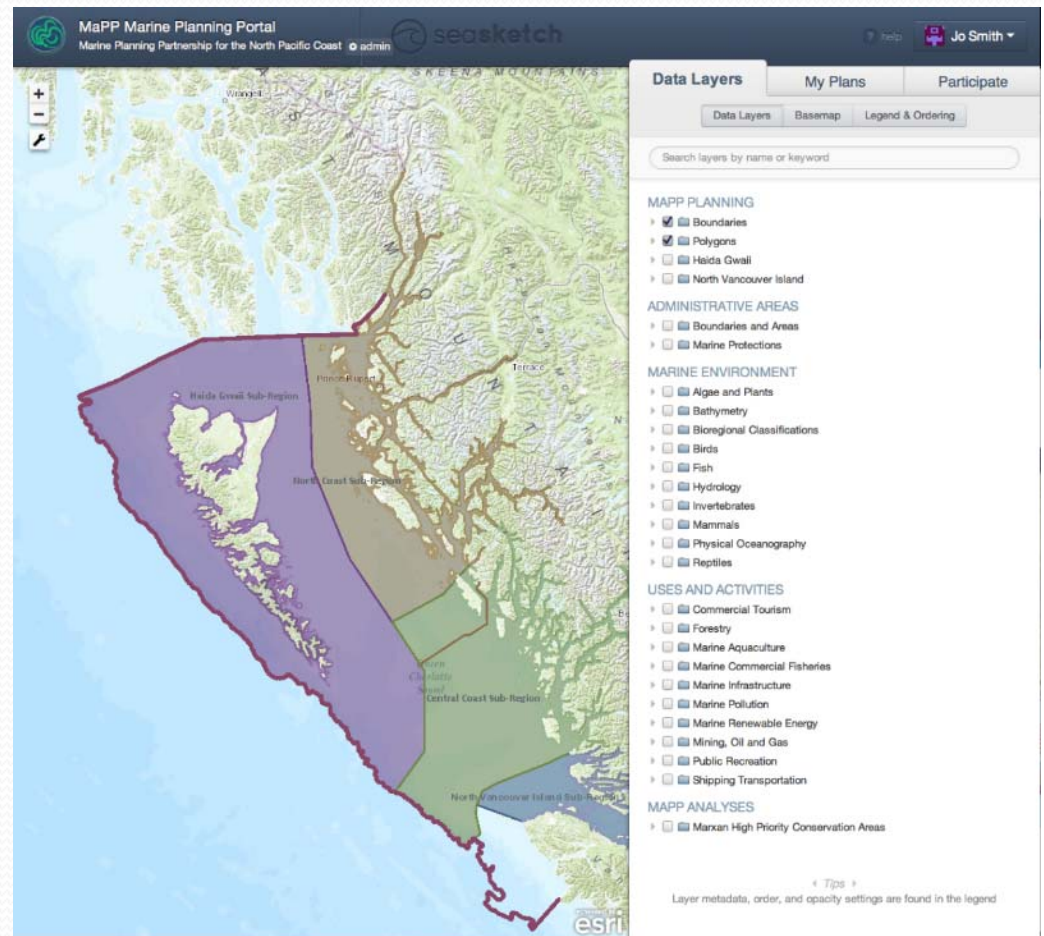
# Spotlight on ShoreZone

- ShoreZone data incorporated in BCMCA and PNCIMA Atlases; important dataset for marine use planning meetings
- ShoreZone data used in Marxan analyses (BCMCA coastwide, MaPP Region, Haida Gwaii Sub-region, etc.) included:
  - Coastal Classes
  - Exposure classes
  - Biobands (Kelp, Eelgrass etc...)



# Planning tools – MaPP Marine Portal

- SeaSketch
- Started Jan 2013
- 160 data layers including ShoreZone bioband data
- Marxan analyses



# Spotlight on ShoreZone

- ShoreZone data pulled up in recent event involving a disabled Russian cargo ship
- Important to have good data available to identify shoreline habitats and shoreline sensitivity/vulnerability to possible oil spills

## Coast Guard tug arrives at Russian cargo ship off Haida Gwaii

1 Coast Guard vessel tried 3 times to keep tow lines attached to the incapacitated ship

Posted: Oct 18, 2014 8:50 AM PT | Last Updated: Oct 18, 2014 6:15 PM PT





*Haaw'a  
How'aa*

*Thank you*