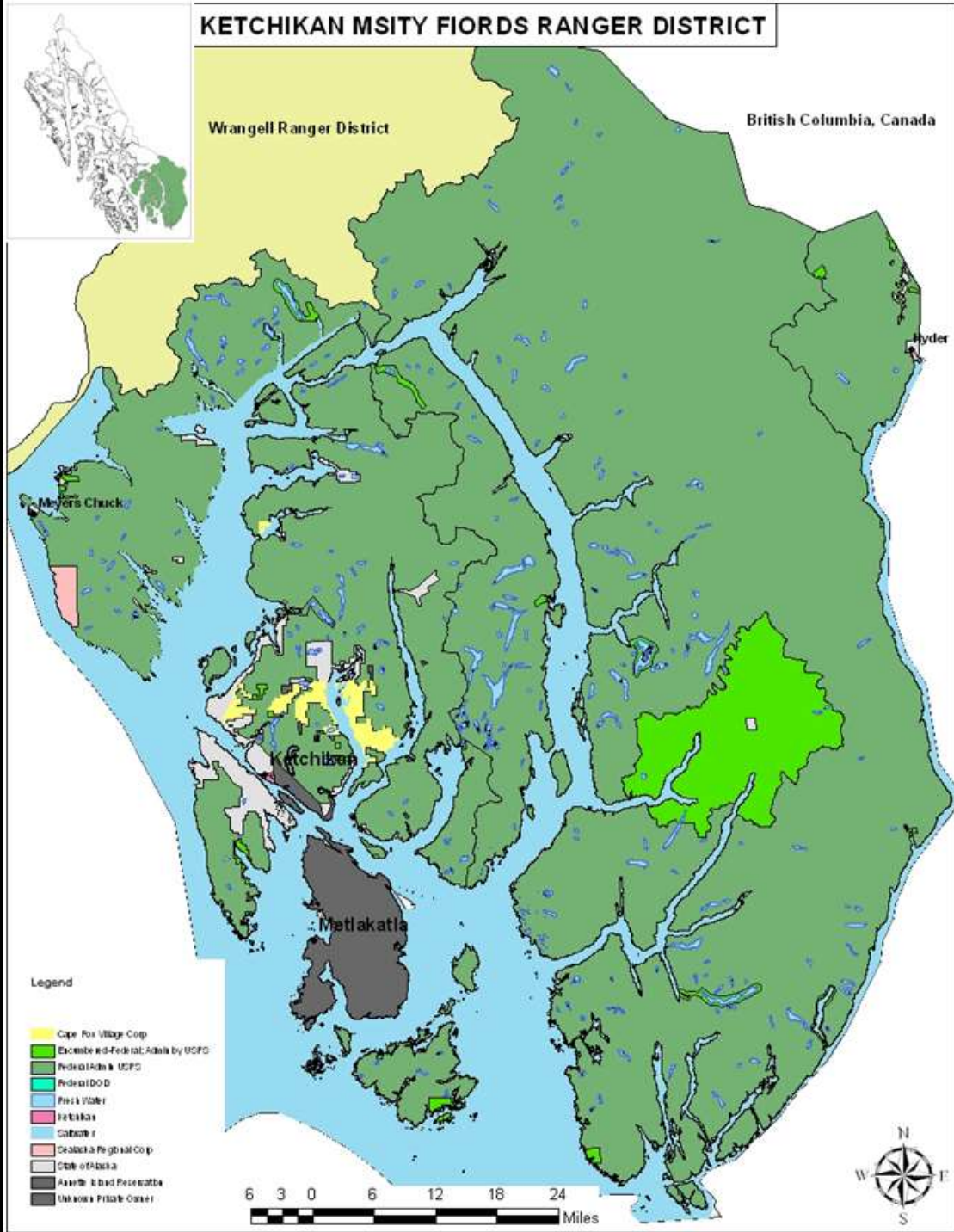
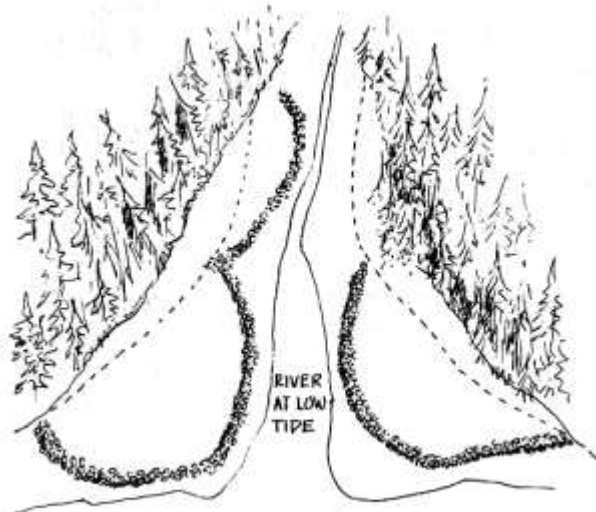


KETCHIKAN MSITY FIORDS RANGER DISTRICT

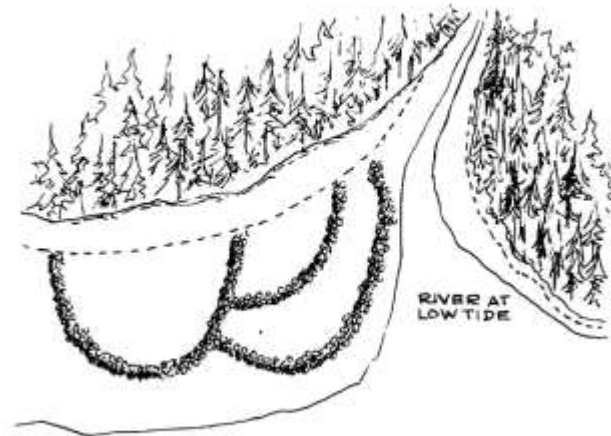


Intertidal Stone Fish Traps

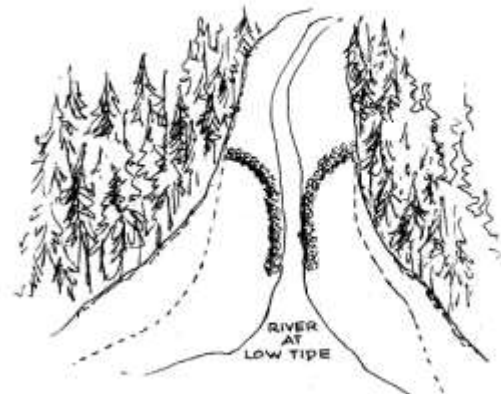
---- HIGH TIDE
 ——— LOW TIDE



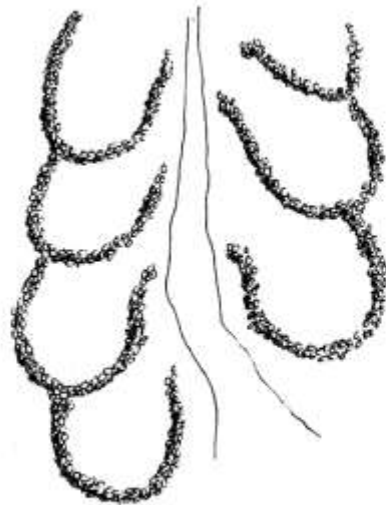
STONE TRAP AT MOUTH OF RIVER IN TIDAL WATER WHERE SALMON CONGREGATE PRIOR TO MIGRATION UPSTREAM. FISH DRIFT IN OVER ROCK WALL WITH INCOMING TIDE, ARE TRAPPED WHEN TIDE GOES OUT.



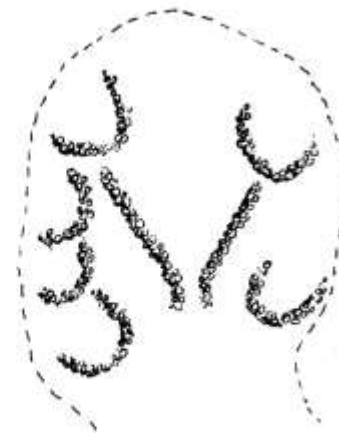
SERIES OF STONE TRAPS ON RIVER MOUTH BANK EXPOSED AT LOW TIDE



ROCK ALIGNMENT. QUITE LIKELY USED WITH BASKET TRAP AT NARROWED NECK

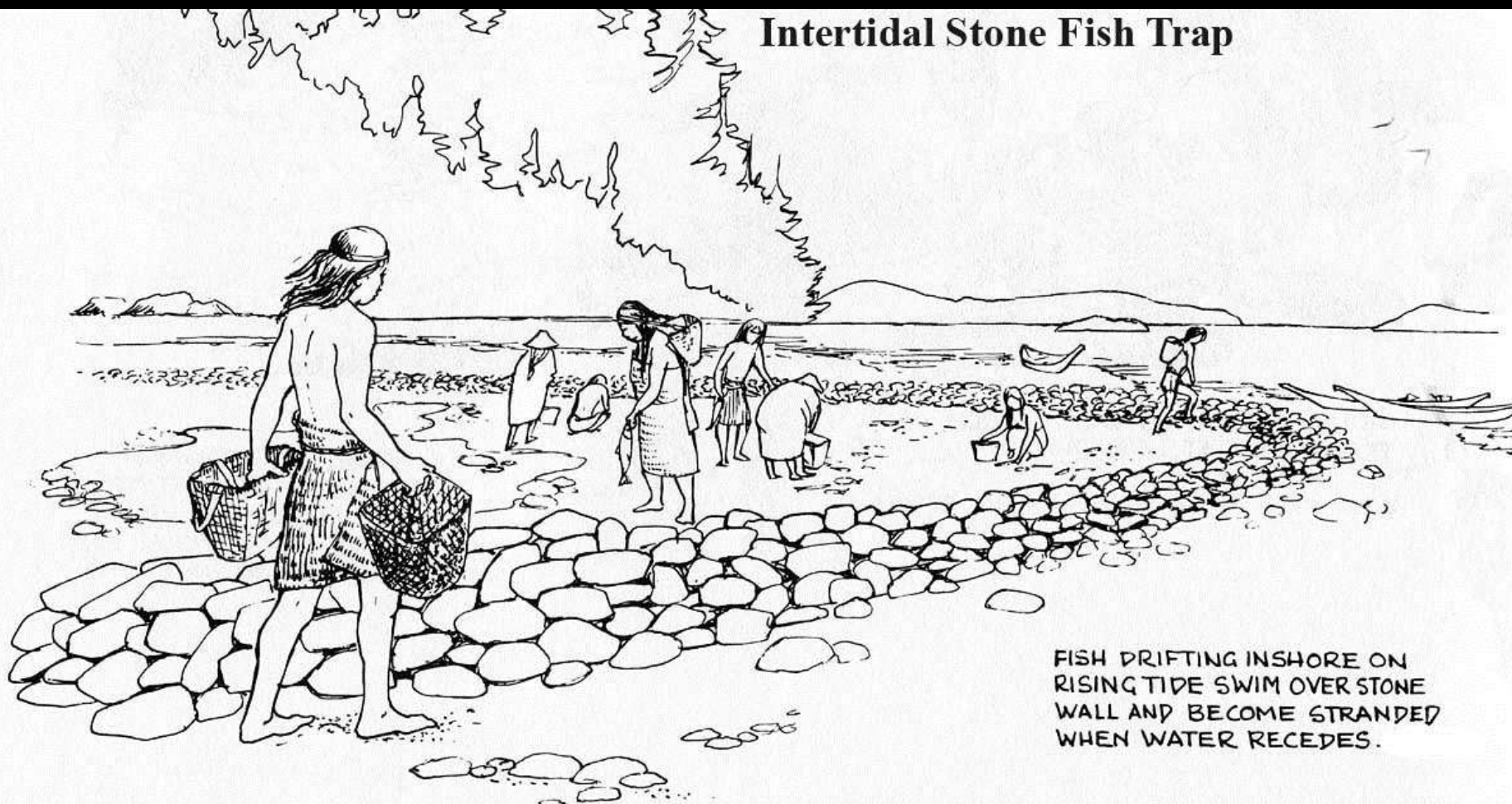


WING DAMS SOMETIMES BUILT IN MULTIPLE GROUPS ON RIVER BANKS



APPROXIMATE LAYOUT OF TRAPS IN BAY ON MITELNATCH ISLAND. V NECK PROBABLY FUNNELLED FISH INTO BASKET TRAP.

Intertidal Stone Fish Trap



FISH DRIFTING INSHORE ON
RISING TIDE SWIM OVER STONE
WALL AND BECOME STRANDED
WHEN WATER RECEDES.











Intertidal Stake Fish Traps

