

ShoreZone Imagery Extent in Western North America



Planning for future ShoreZone work and NOAA's 5-year Plan for Alaska ShoreZone Program

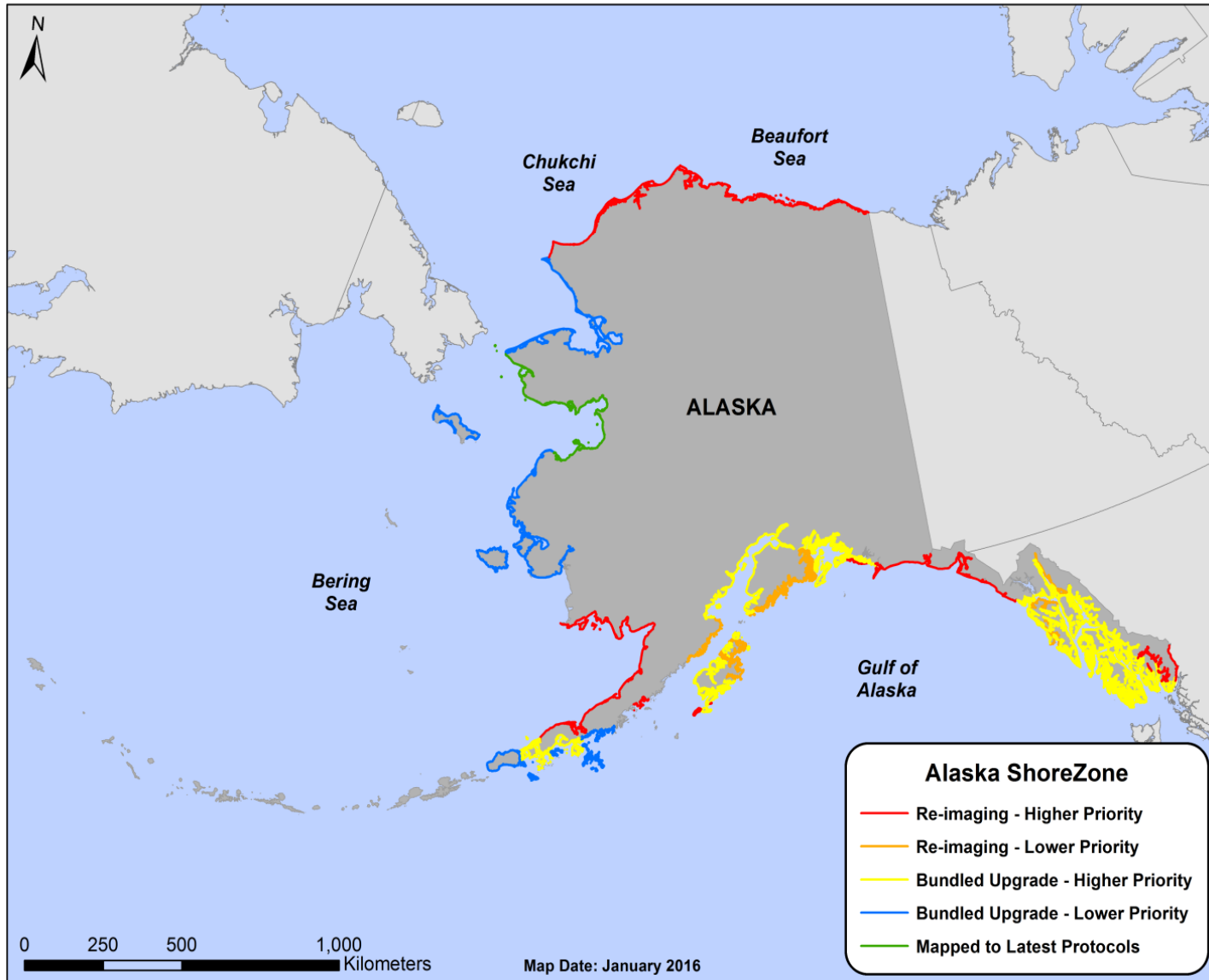
ShoreZone Data Covers 92% of Alaska's Coastline



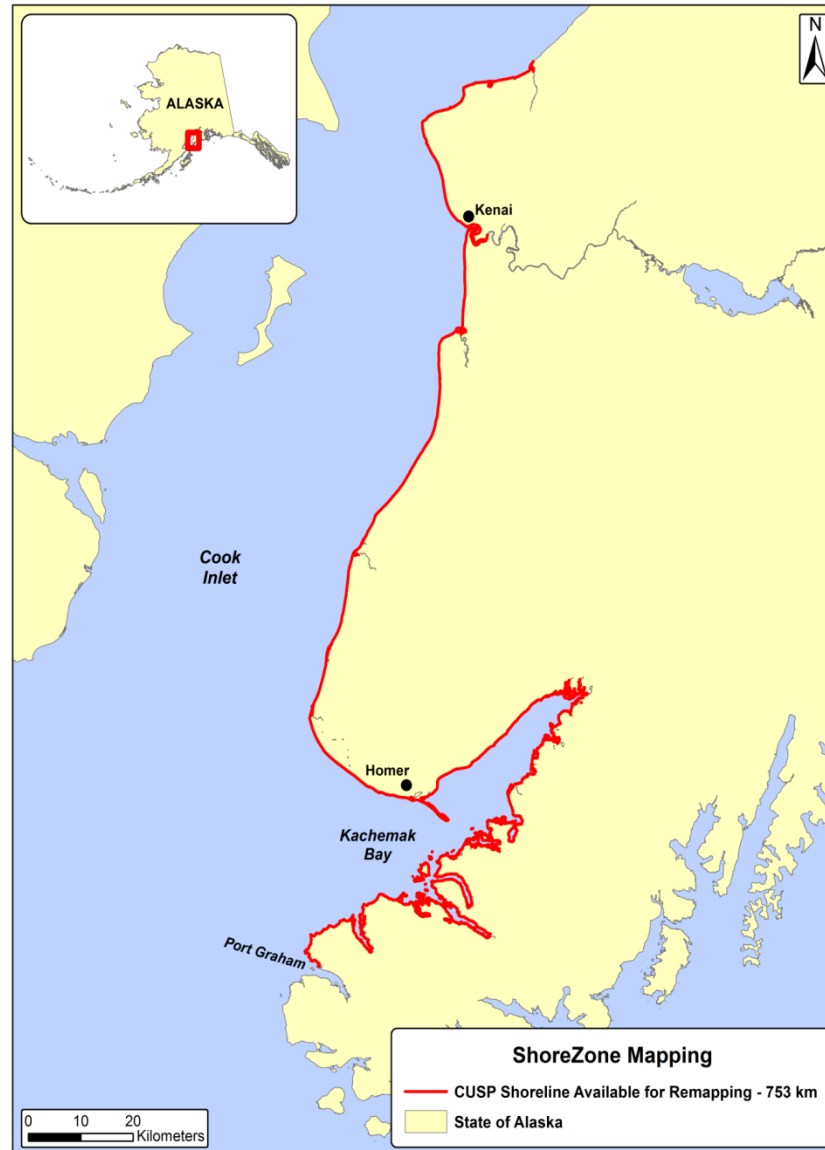
What's the 8% with no ShoreZone Data

- **Central and Western Aleutian Islands (~4,000)**
- **Bering Sea Islands: St. Paul, St. George, St. Matthew (300 km)**
- **St. Lawrence Island – imagery gap (184 km)**
- **Glacier Bay (1,040 km)**
- **Forrester Island (32 km)**

Priority Areas for re-imaging/re-mapping



Re-mapping Kachemak Bay



Pacific Coast ShoreZone Gap



NMFS Alaska Region

5-Year Plan for Alaska ShoreZone Program

- **Goal I: Acquire imagery and mapping data**
- **Goal II: Manage dataset and make available to the public**
- **Goal III: Support development of value added products**
- **Goal IV: Provide for the longevity of the program**