

2016 Annual ShoreZone Partner Meeting

12-13 October 2016

Hotel Captain Cook, Anchorage



Alaska ShoreZone Program: A partnership of organizations collaborating on the various components of ShoreZone

Alaska Dept. of Natural Resources (Coastal Impact Assistance Program)
 Alaska Dept. of Fish and Game
 Alaska Ocean Observing System
 Aleutian and Bering Sea Islands Landscape Conservation Cooperative.
 Archipelago Marine Research Ltd
 Arctic Landscape Conservation Cooperative
 Bureau of Ocean Energy Management
 Bureau of Safety and Environmental Enforcement
 Coastal and Ocean Resources Inc
 Cook Inlet Regional Citizens Advisory Council
 Exxon Valdez Oil Spill Trustee Council
 Geographic Information Network of Alaska, UAF
 Kachemak Bay Research Reserve
 Kenai Peninsula Borough
 National Park Service
 NOAA National Marine Fisheries Service
 NOAA, Alaska Regional Office
 North Pacific Research Board
 Oil Spill Recovery Institute
 Pacific States Marine Fisheries Commission
 Prince William Sound Regional Citizens Advisory Council
 Prince William Sound Science Center
 Royal Caribbean Cruise Lines Ocean Fund
 Sitka Tribe of Alaska
 The Skaggs Foundation
 Southeast Alaska Petroleum Resources Organization
 The Nature Conservancy
 U.S. Coast Guard
 U.S. Fish & Wildlife Service
 National Fish & Wildlife Foundation
 USDA. Forest Service



absi

University of Alaska Fairbanks Geographic Information Network of Alaska



Wednesday, October 12th ShoreZone Partners Meeting

Quadrant Room, lower level, Hotel Captain Cook

- 1:00 – 1:15 pm **Welcome and Introduction** (*Susan Saupe, Cook Inlet Regional Citizens Advisory Council*)
- 1:15 – 1:35 **ShoreZone Partnerships, coordination and outreach** (*Mandy Lindeberg, NOAA, NMFS*)
- 1:35 – 1:50 **ShoreZone progress report: ShoreZone updates and a look ahead** (*Carl Schoch, Coastal and Ocean Resources Inc.*)
- 1:50 – 2:00 Q&A
- 2:00 – 2:15 **Break**
- 2:15 – 3:15 **What's New in ShoreZone**
- 2:15 Image acquisition in 2016 (*CORI*)
 - 2:30 Revised protocols part 1 (*CORI*)
 - 2:45 Revised protocols part 2 (*CORI*)
 - 3:00 NOAA website and data interface (*Steve Lewis, NOAA, NMFS*)
- 3:15 – 3:30 **Planning for future ShoreZone work and NOAA's 5-year plan** (*Cindy Hartmann Moore, NOAA NMFS*)
- 3:30 – 4:50 **ShoreZone applications, integration and uses**
- 3:30 ERMA and updates from NOAA ORR (*Zach Winters, ERMA*)
 - 3:40 CIRCAC 2016 Shore Station surveys and ShoreZone integration (*Sue Saupe, CIRCAC*)
 - 3:50 Filling that Pesky SE Alaska ShoreZone "Gap": A Plan and Vision from NPS (*Lewis Sharman, NPS, Glacier Bay National Park and Preserve*)
 - 4:00 Marine Debris Challenges Along the Norther Gulf of Alaska Coast (*Chris Pallister, Gulf of Alaska Keeper*)
 - 4:10 NOAA 2016 Semi-Oblique Coastal Imaging (*Nicole Kinsman, NOAA, NGS*)
 - 4:20 Use of ShoreZone by Bering Land Bridge National Preserve (*Jeanette Koelsch, NPS*)
 - 4:30 The CoastView travel app: providing a virtual experience for coastal adventurers (*Amalie Couvillion*)
 - 4:40 Q&A
- 4:50 – 5:00 **Closing remarks**



Thursday, October 13th

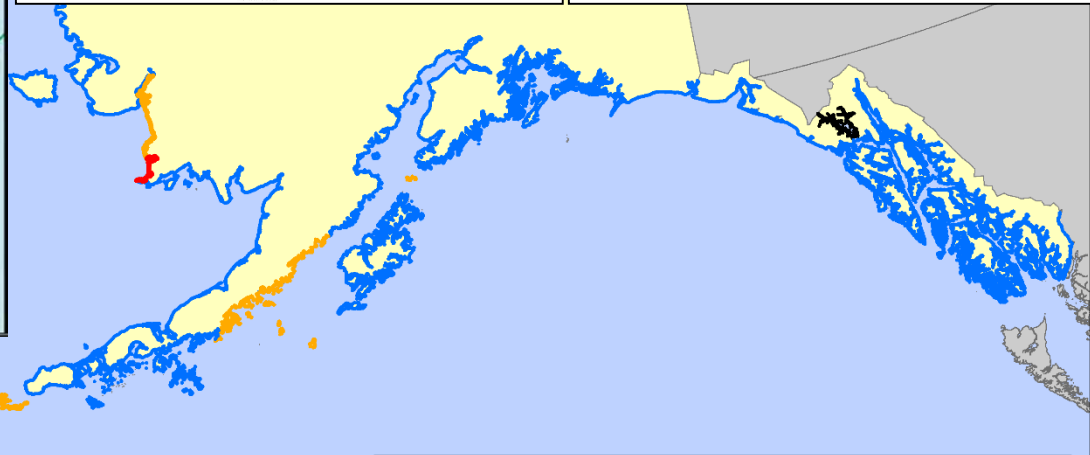
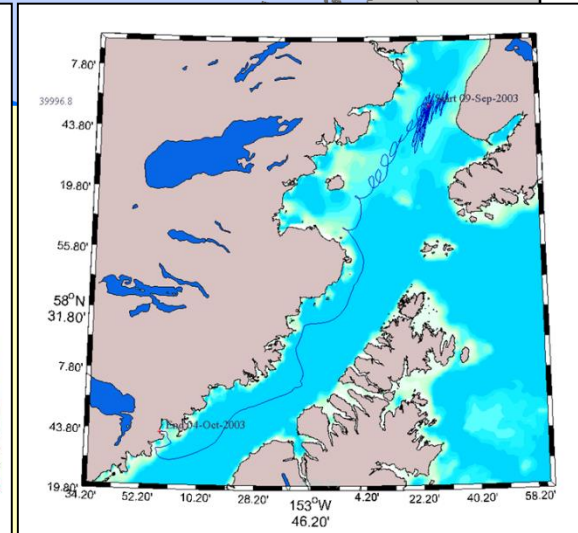
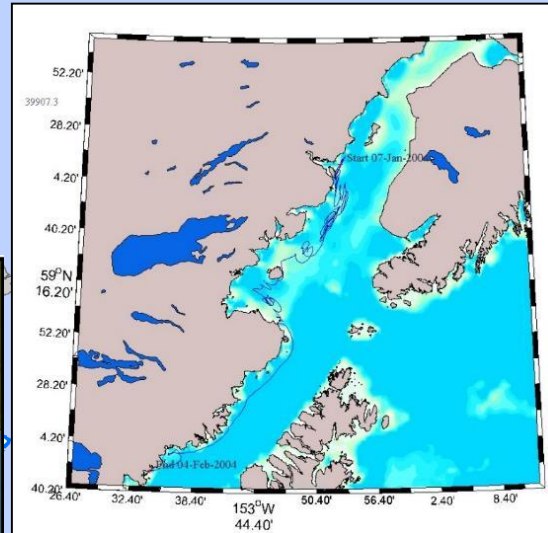
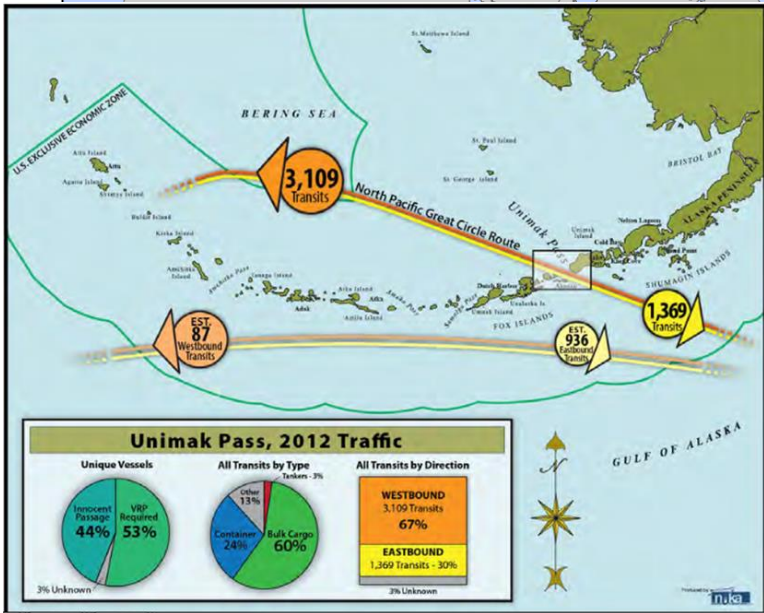
ShoreZone Working Group Meetings

Quadrant Room, lower level, Hotel Captain Cook

- 8:00 – 9:00 am **Data management discussion** (*Steve Lewis, NOAA, NMFS and Carl Schoch, CORI*)
- 9:00 – 9:45 **Outreach and education** (*Sue Saupe, CIRCAC and Kelly Ingram, The Nature Conservancy*)
- 9:45 – 10:00 **Break**
- 10:00 – 11:00 **Coordination and coordinator funding** (*Kelly Ingram, The Nature Conservancy*)
- 11:00 – 12:00 **Strategic planning and ShoreZone surveys** (*Cindy Hartmann Moore and Steve Lewis, NOAA, NMFS*)



ShoreZone Coastal Habitat Mapping Program in Alaska



- Imaged and mapped (67,786 km)
- Imaged; mapping in progress (6,236 km)
- Imaged; funding needed for mapping (1,746 km)
- Funding needed for imagery and mapping (~6,000 km)
- State of Alaska

Map Date: July 2016



