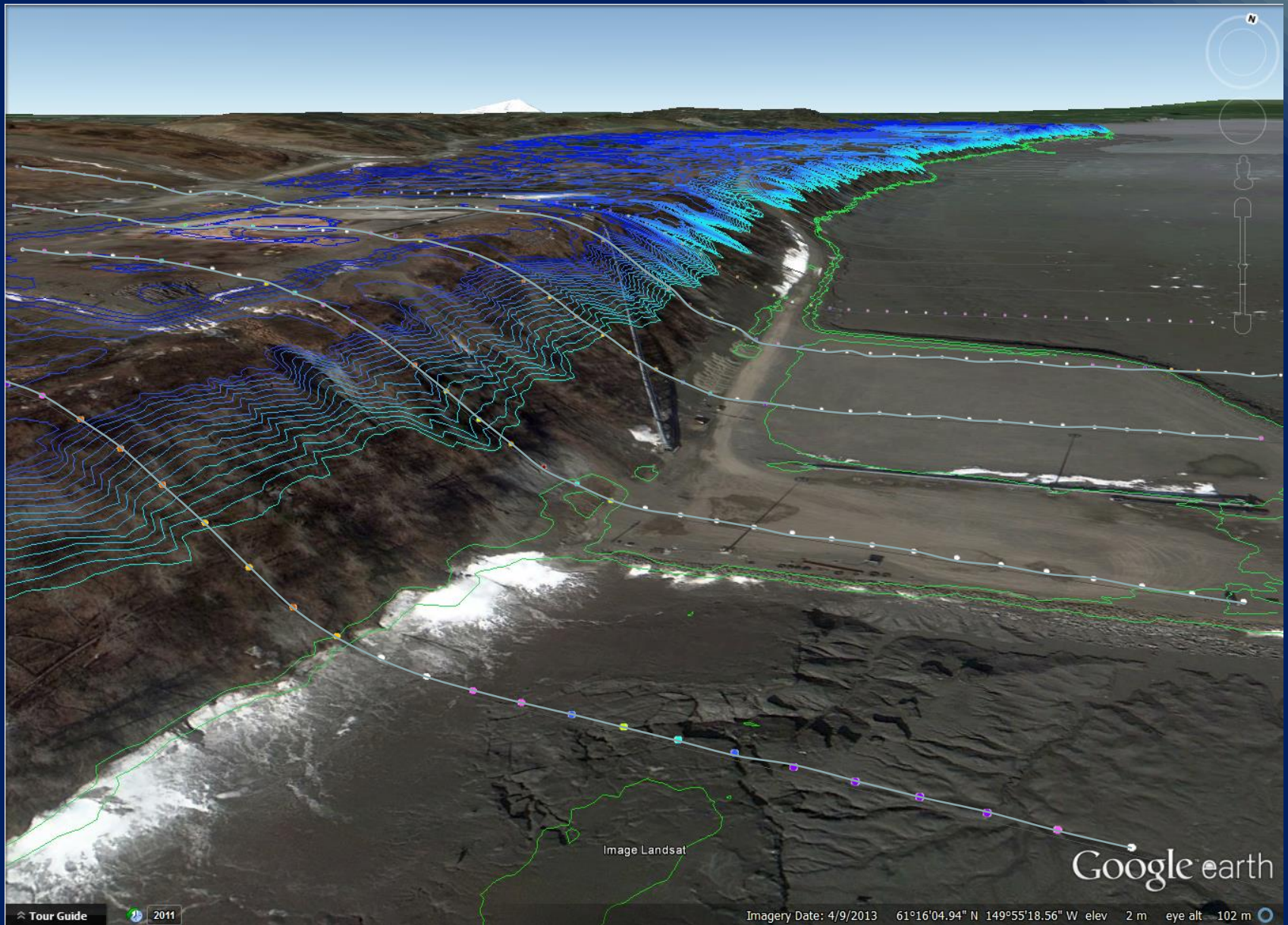


Digital Elevation Modeling and ShoreZone

Dr. Carl Schoch



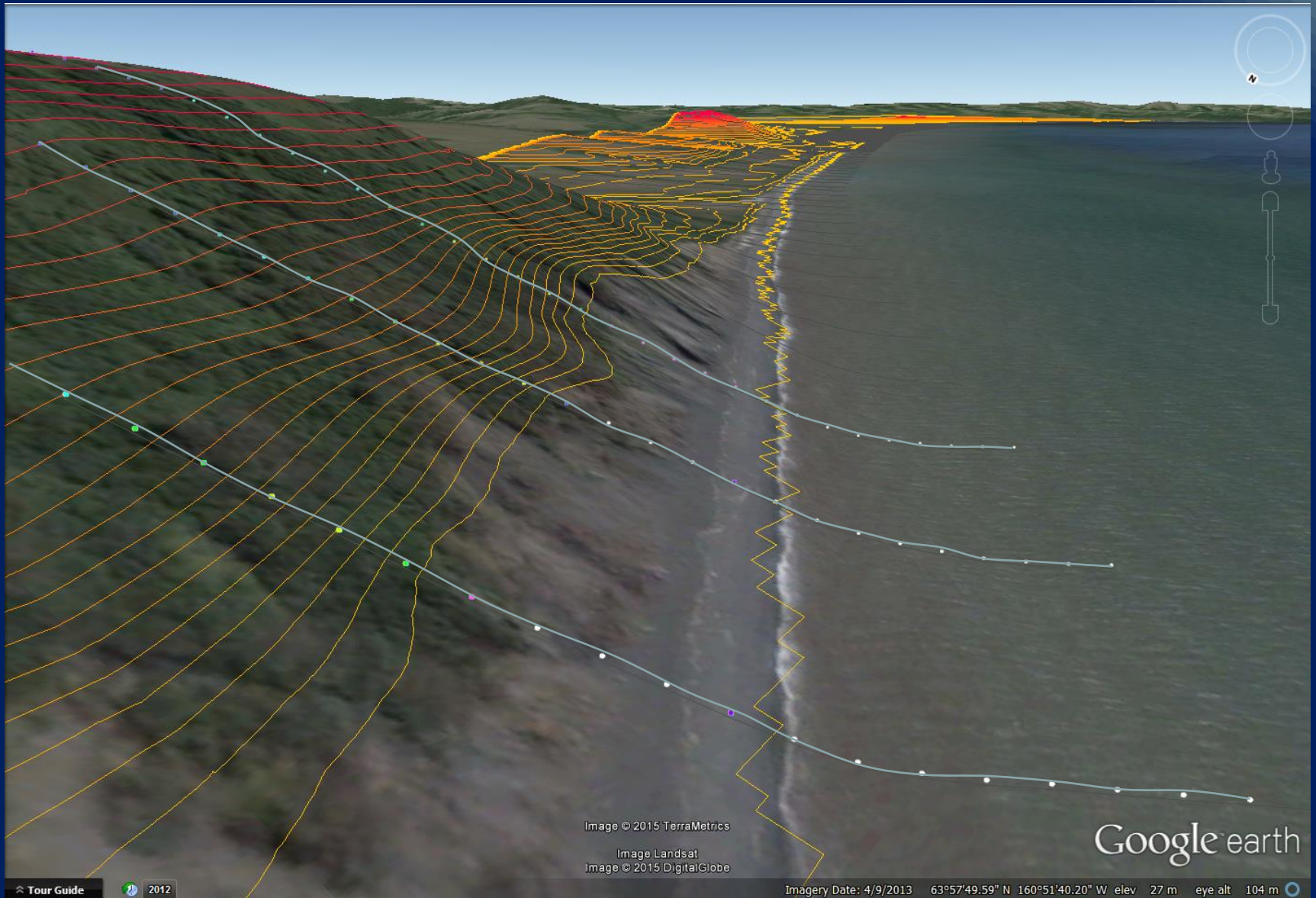
The utility of Lidar for ShoreZone mapping



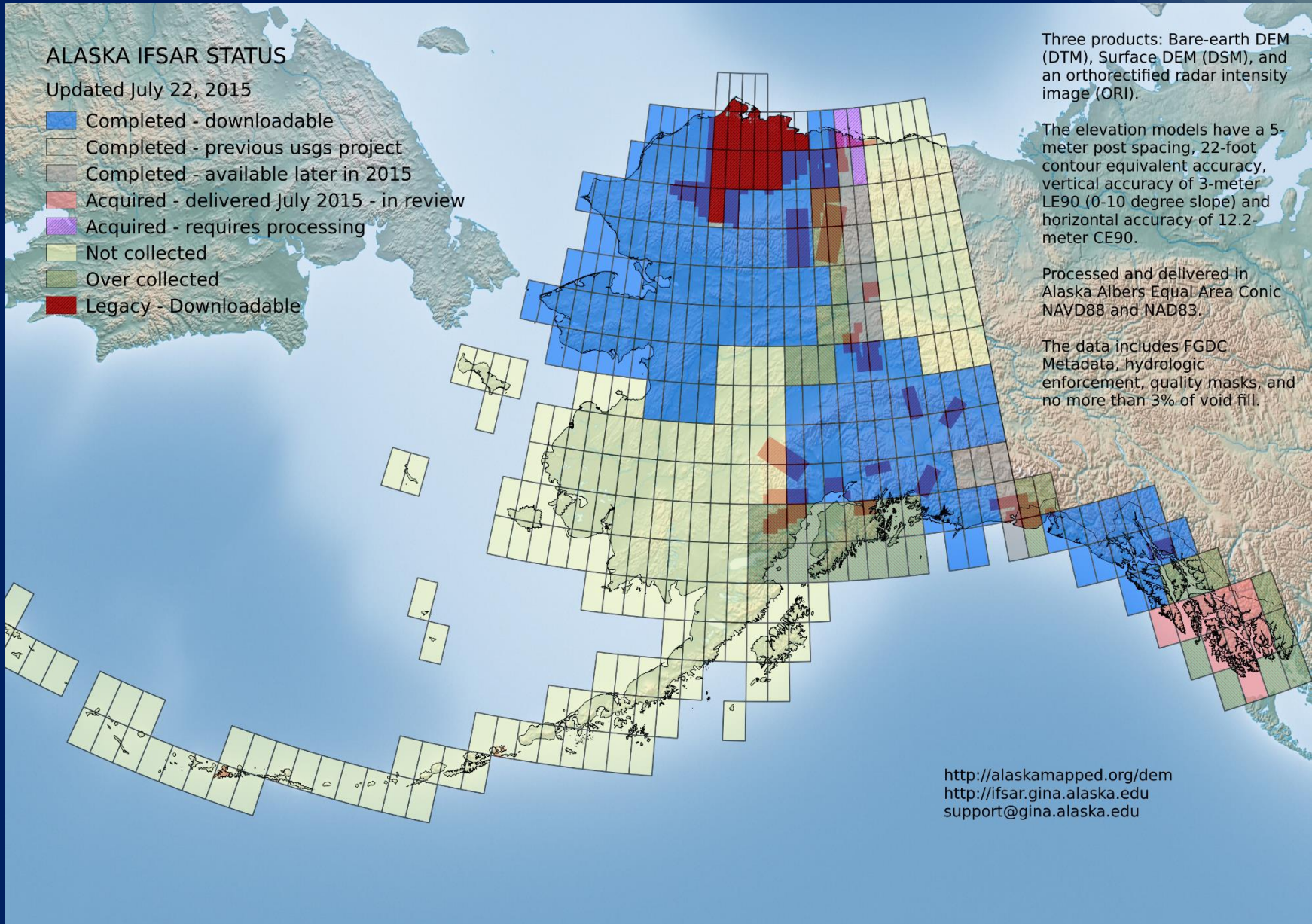
Alaska Airborne Lidar Status



The utility of IfSAR for ShoreZone mapping



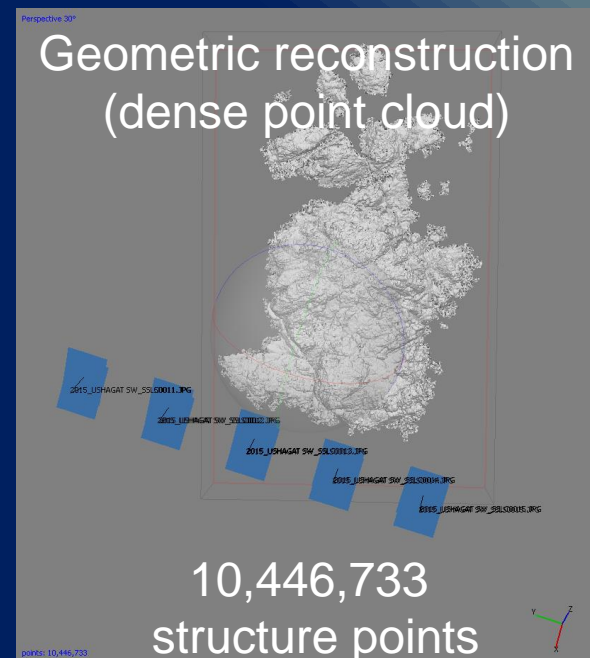
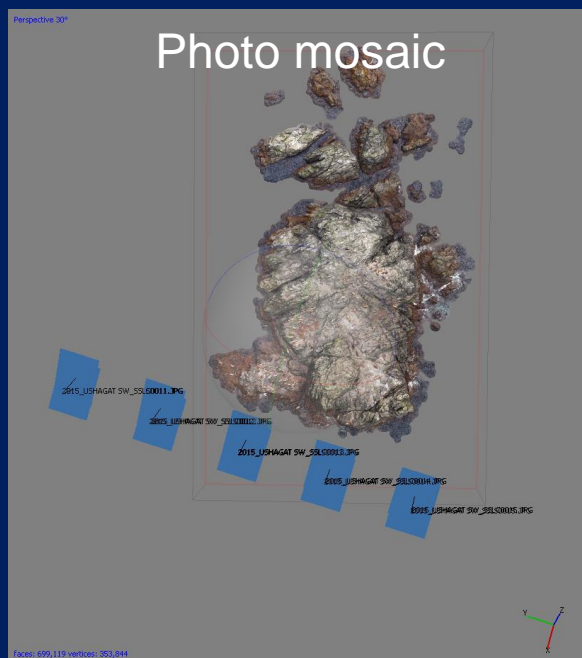
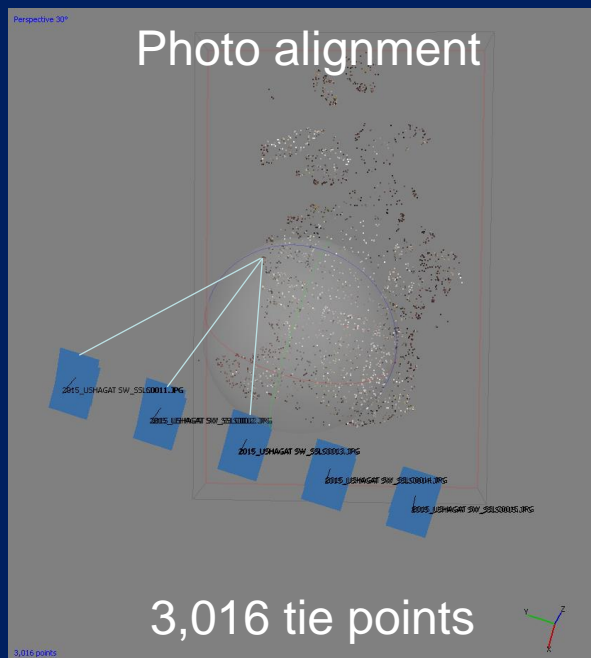
Alaska Airborne IfSAR Status



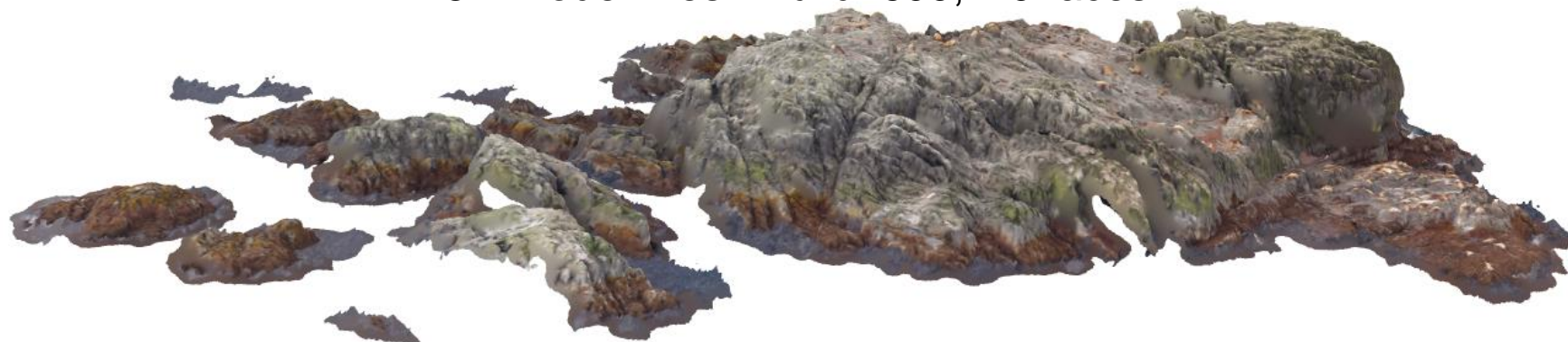
Structure from motion (from vertical aerial images)



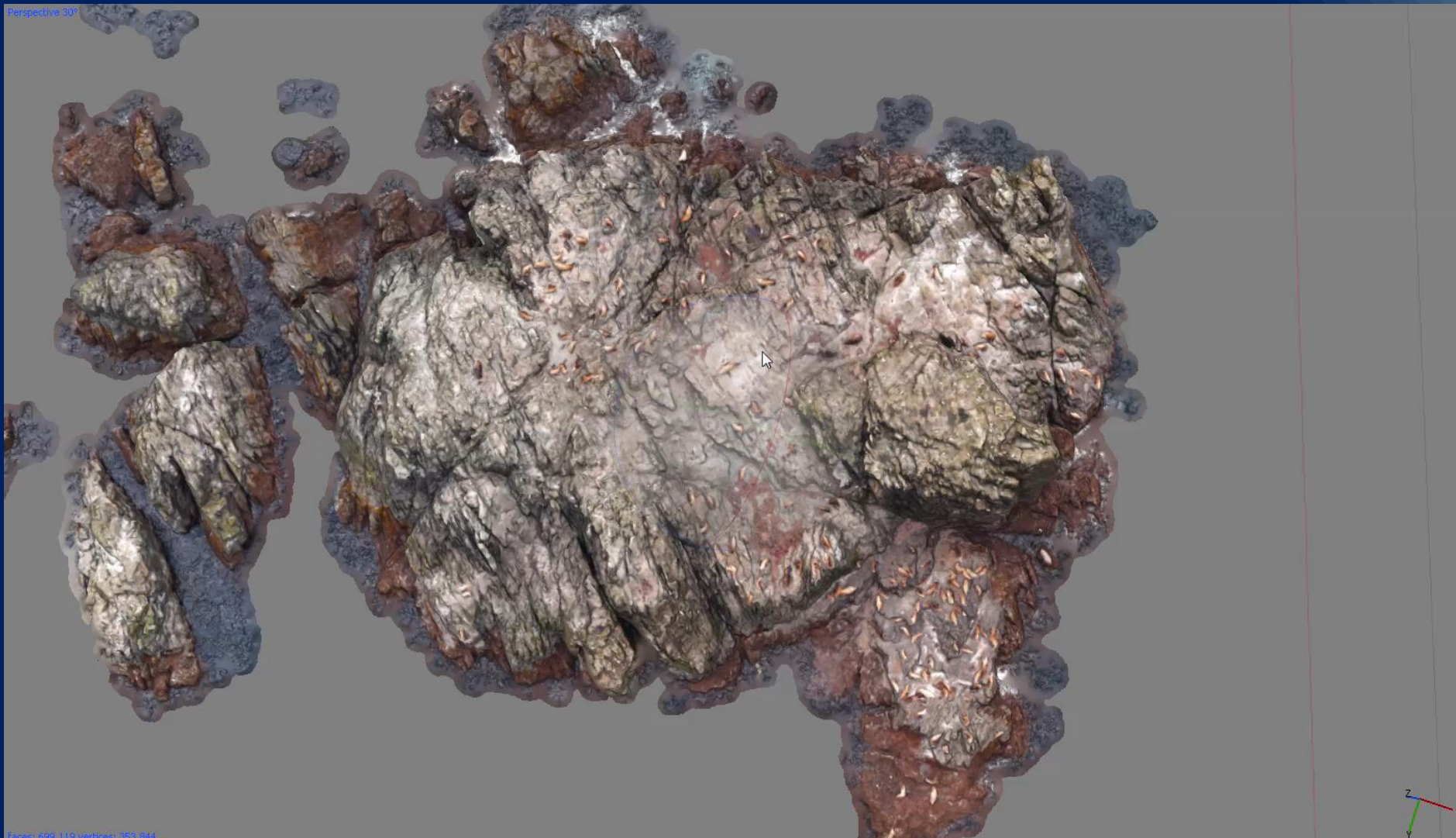
Structure from motion



3D Model Mesh Build: 699,119 faces

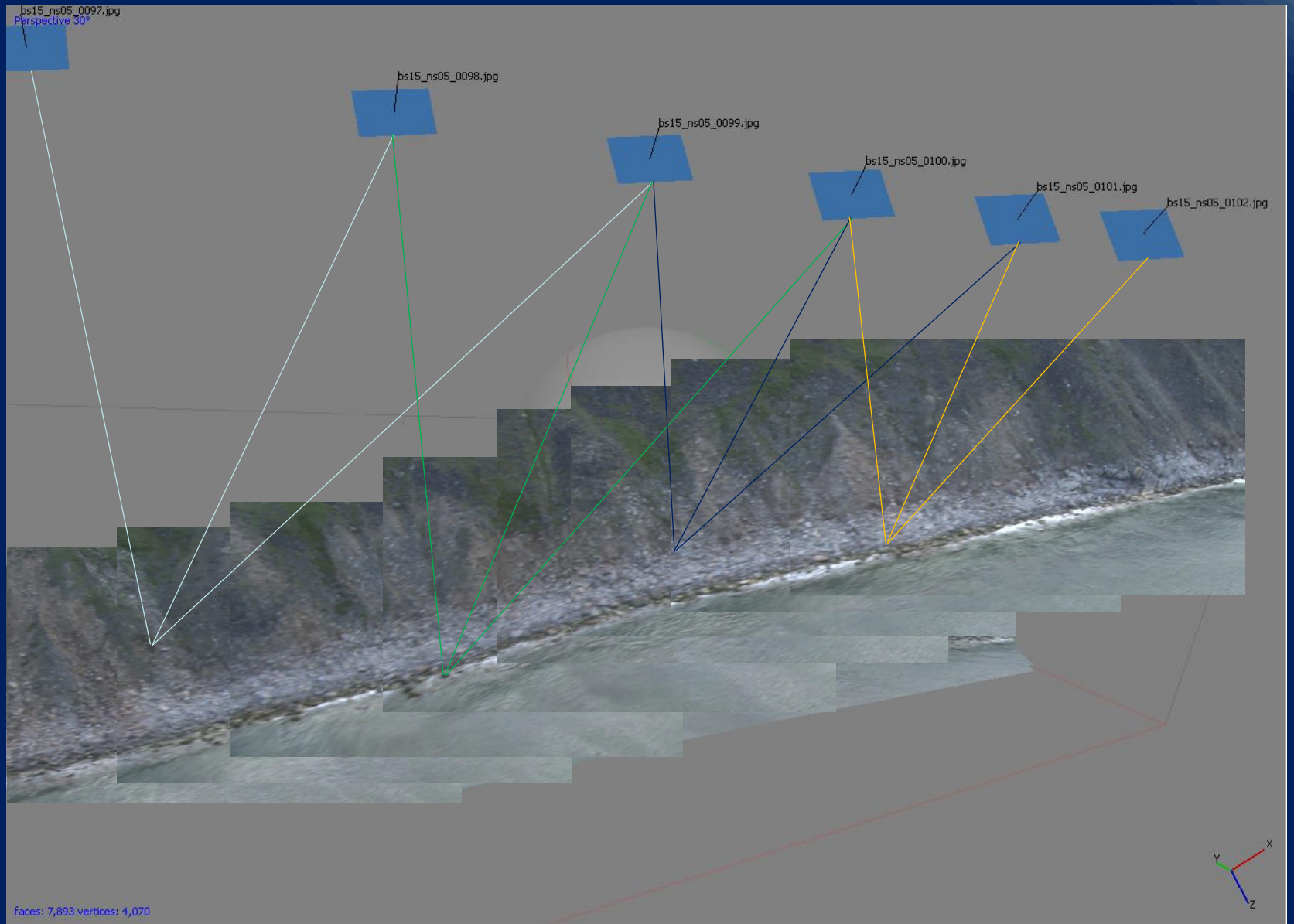


Structure from motion



Faces: 629, (19 vertices), 353,844

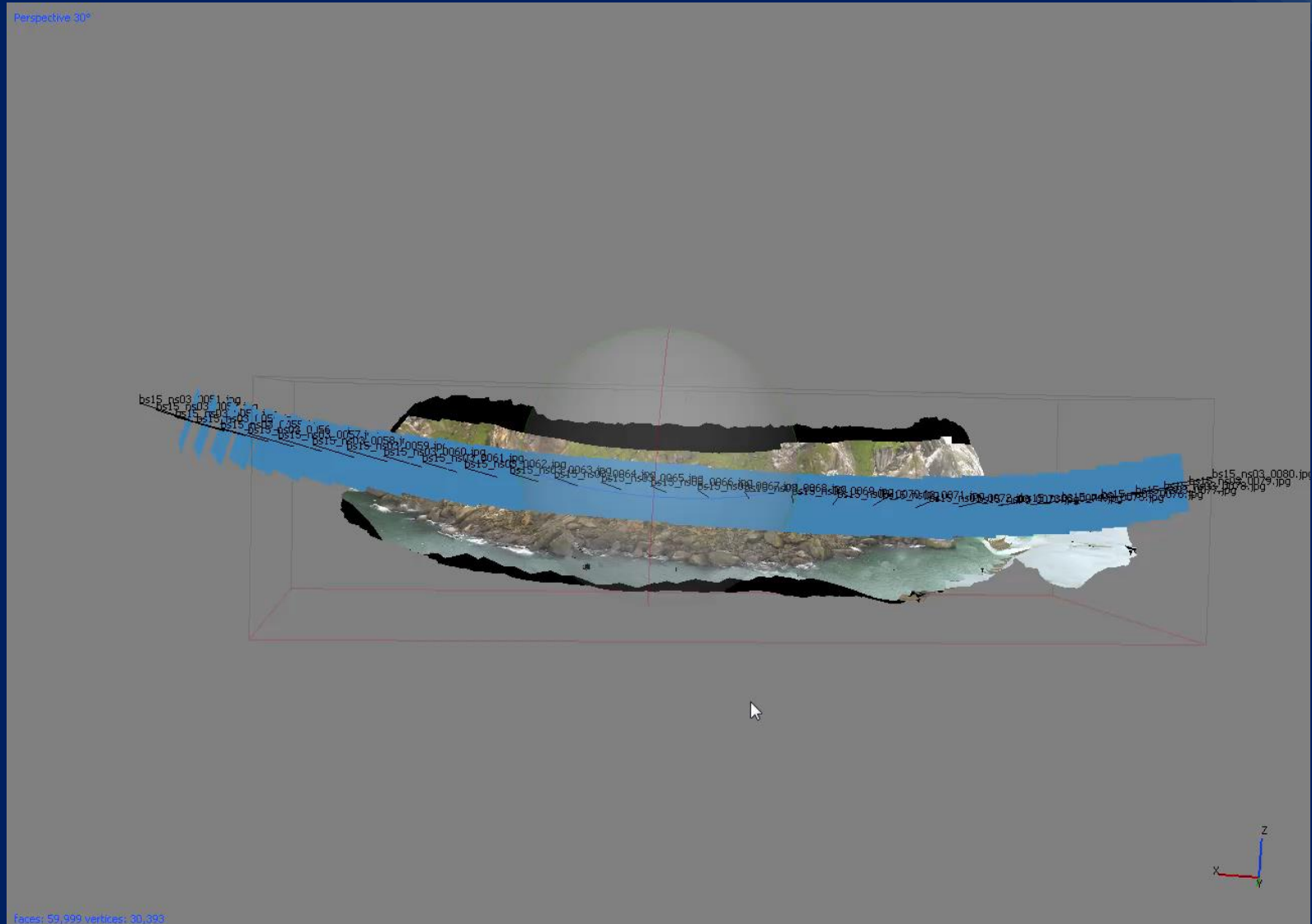
Structure from motion (from oblique video images)



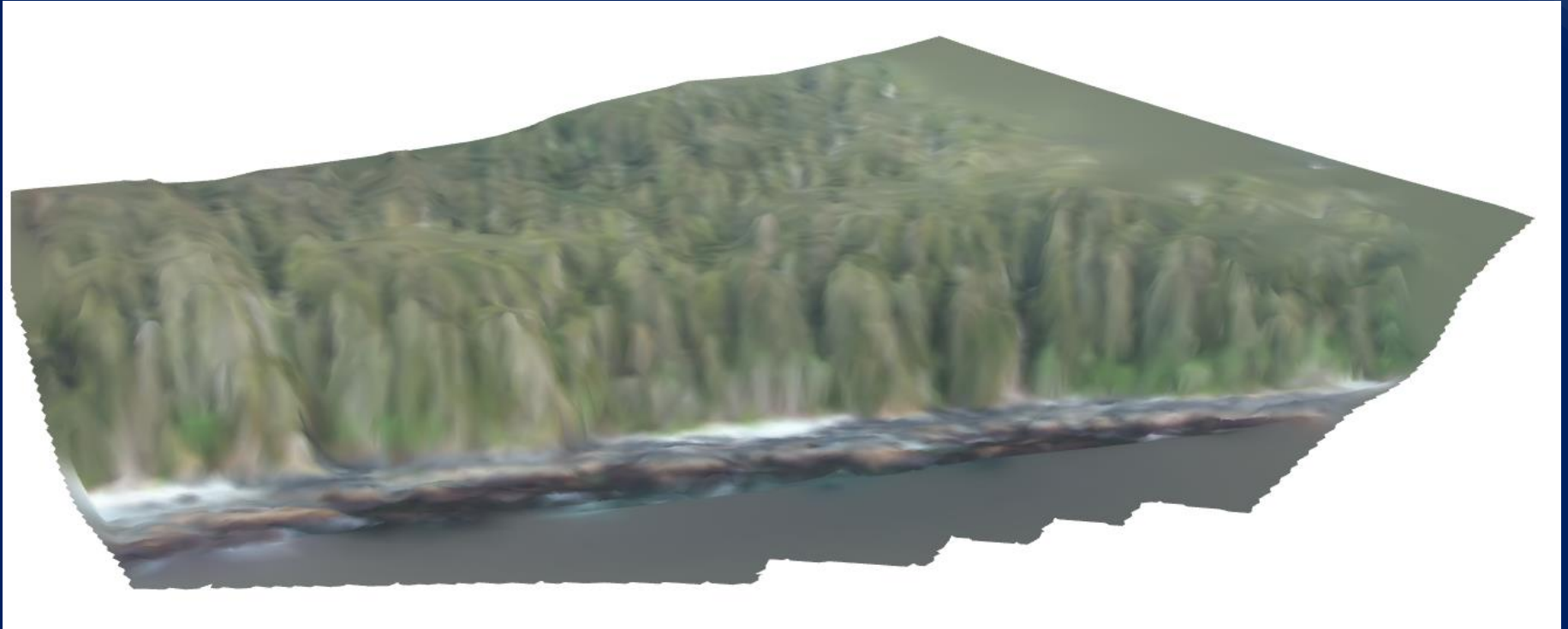
Structure from motion (from oblique video images)



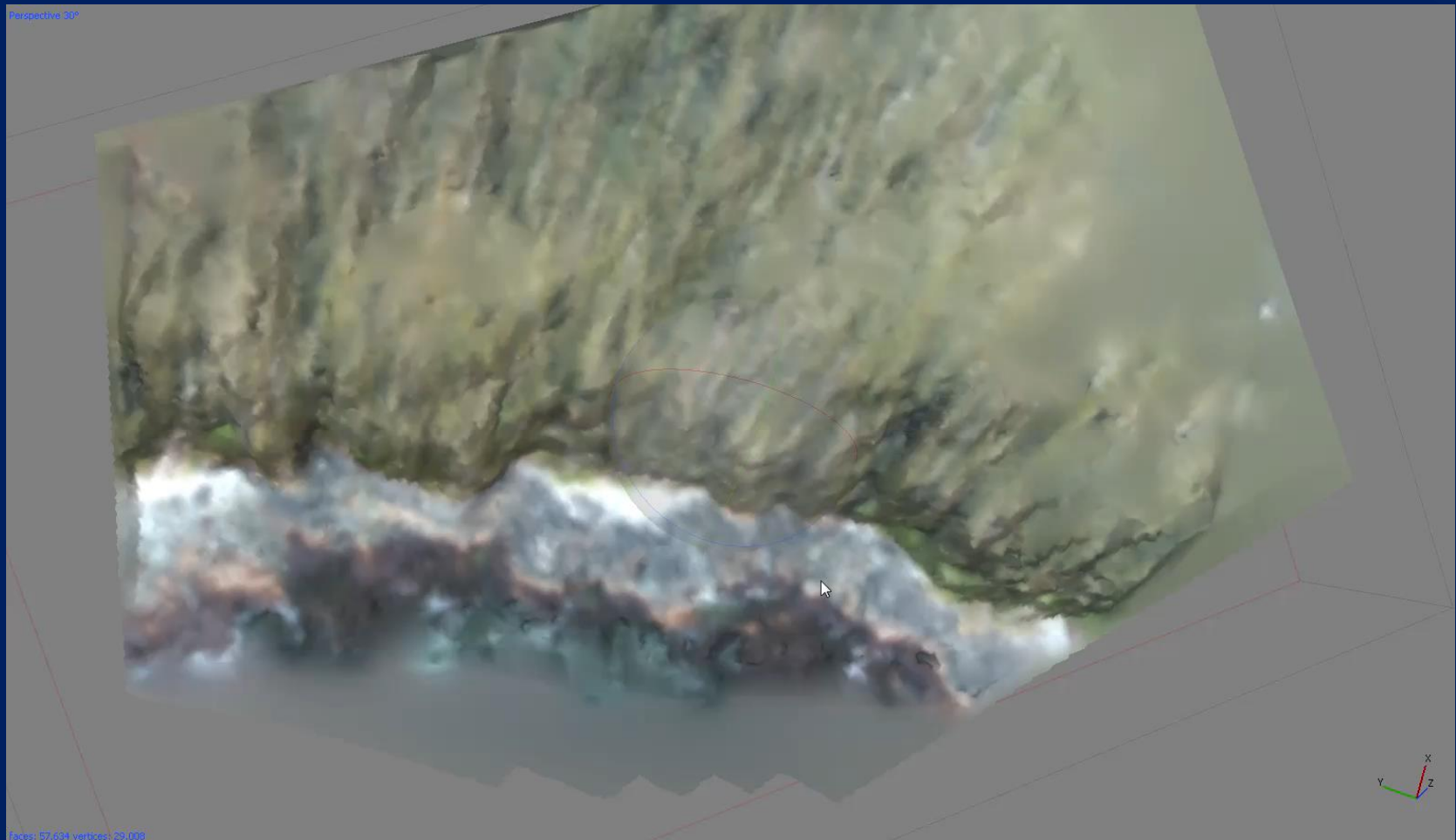
Structure from motion (from oblique video images)



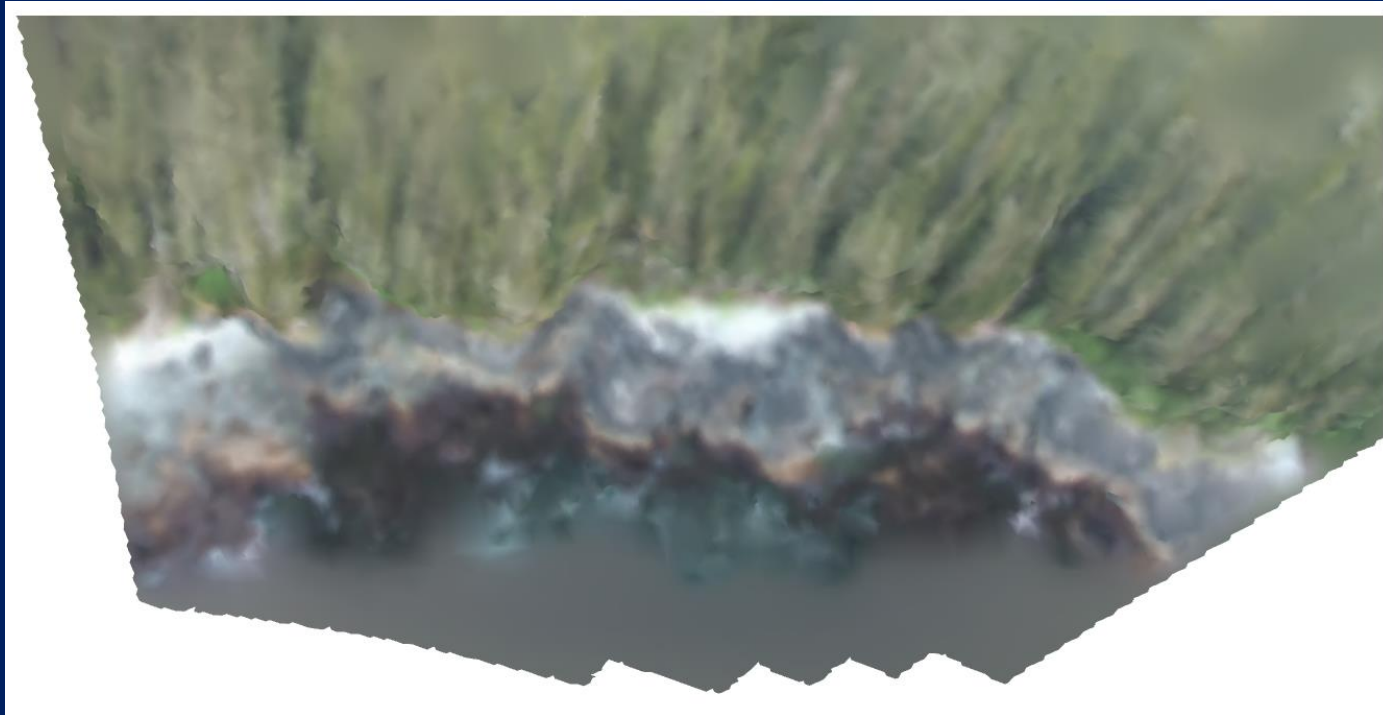
Structure from motion (from oblique video images)



Structure from motion (from oblique video images)



Structure from motion ortho-mosaics (exported as .kml)



.kml imported into Google Earth



ShoreZone Questions?



Coastal and Ocean Resources

Dr. Carl Schoch

carl@coastalandoceans.com

Tel: 250-658-4050

Mobile: 907-299-1332